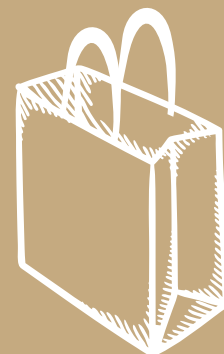


PAPER BAG

纸袋魔法手册 Paper Bag Magic

从平面到立体的无限可能
From Sheet Paper To Paper Bag Unlimited Possibilities

亚森精品纸袋机 / 干中学团队出品



www.paper-bag-machine.com



非卖品

《纸袋魔法手册》前言

亲爱的合作伙伴与创意家人们：

感谢您选择这本凝聚纸袋工艺智慧的《纸袋魔法手册》！我们致力于将复杂的生产工艺转化为人人都能掌握的“魔法公式”，让每一张平凡的纸张在您的指尖蜕变为承载商业价值的艺术载体。我们相信，当技术遇见想象力，平凡的纸袋也能成为商业世界的“魔法信使”。

手册核心价值

① 工艺全解密

从刀模设计到立体成型，从手把绳选材到底卡承重测试，手册以图文并茂的形式拆解纸袋制作的16道核心工艺，涵盖环保纸张、印刷工艺、覆膜特种纸等材料特性对比，以及模切精度、糊口粘合等生产细节。看懂纸张从平面到立体的跃迁。

② 实战赋能

无论您是设计师、生产主管还是业务人员，都能通过手册快速掌握：

成本控制：纸张克重与承重关系的黄金比例；

品质保障：头卡抗撕裂测试标准与底卡防潮方案；

创意落地：烫金、UV等工艺与不同纸材的适配法则。

顺祝商祺！

愿魔法与订单同在！

欢迎扫码关注亚森视频号

*Just
For
You!*



**WE
ARE
CHAMPION
MACHINERY**

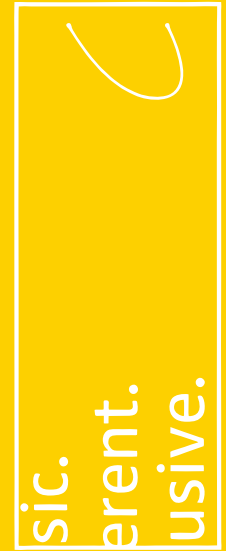
*WEAR
IT*



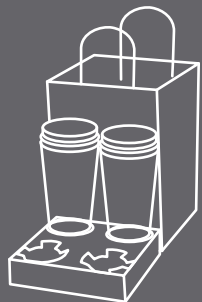
ETHER



WE G



**clas
diff
excl**

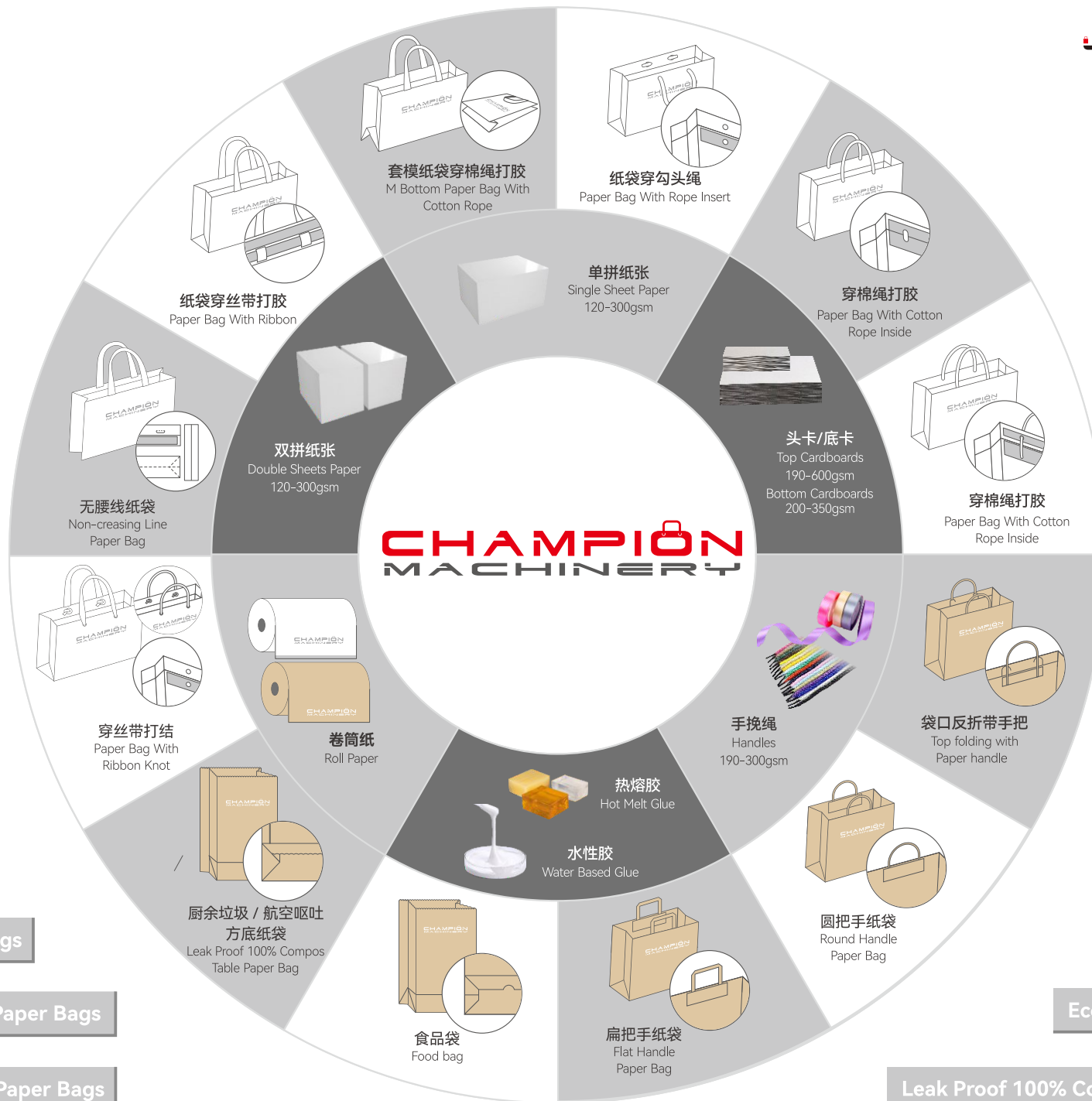


*Passion
never
fails*

**HEALTHY
STUFF
INSIDE**

**MACHINERY
MANUFACTURER
OF LUXURY
PAPER BAGS**

ROW



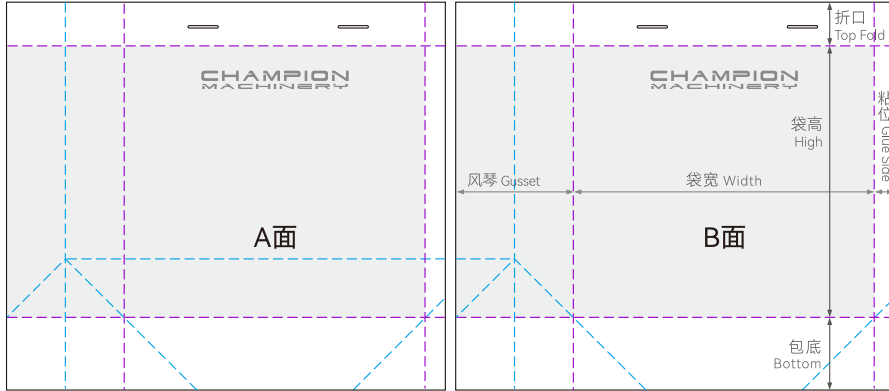
双拼/单张八字底刀模图

Double Sheets Paper / Single Sheet Paper Die Cutter Mould



双拼纸袋刀模 / Double Sheets Mould

(右手位)

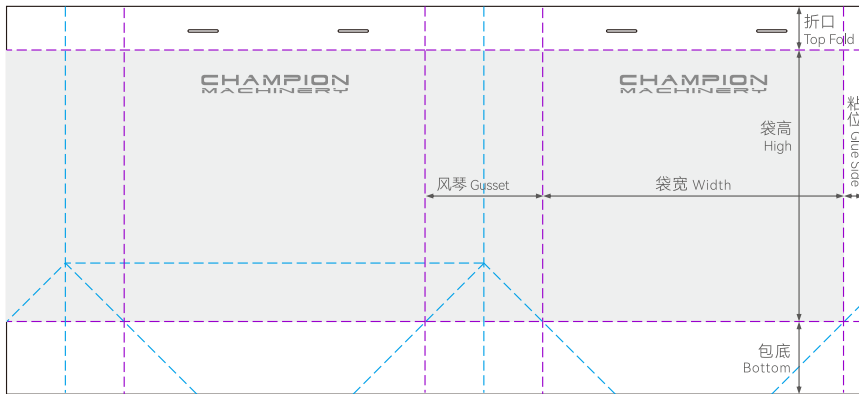


袋宽 / Width 袋高 / High 风琴 / Gusset

折口 / Top Fold 包底 / Bottom 粘位 / Glue Side

单张纸袋刀模 / Single Sheet Mould

(右手位)



袋宽 / Width 袋高 / High 风琴 / Gusset

折口 / Top Fold 包底 / Bottom 粘位 / Glue Side

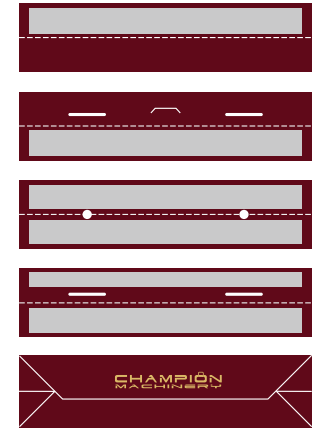
图中黑色为切断线, 紫色为正压线, 蓝色为反压线灰色为成品区

Black Is The Cut-off Line, Purple Is The Positive Pressure Line, And Blue Is The Negative Pressure Line, Gray is the finished paper bag area

纸袋展示 / Paper Bag



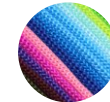
袋头 / 袋底展示 / Bag Head / Bag Bottom Showing



绳子样式 / Rope



棉绳
Cotton Rope



尼龙绳
Nylon Rope



三股绳
Three-strand Rope



棉纱绳
Cotton Yarn Rope



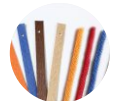
丝带
Ribbon



缎带
Ribbon



牛皮纸绳
Kraft Paper Rope



针通纸绳 / 纸排绳
Needle Paper String / paper String

头卡 / Top Card Board



底卡 / Bottom Card Board



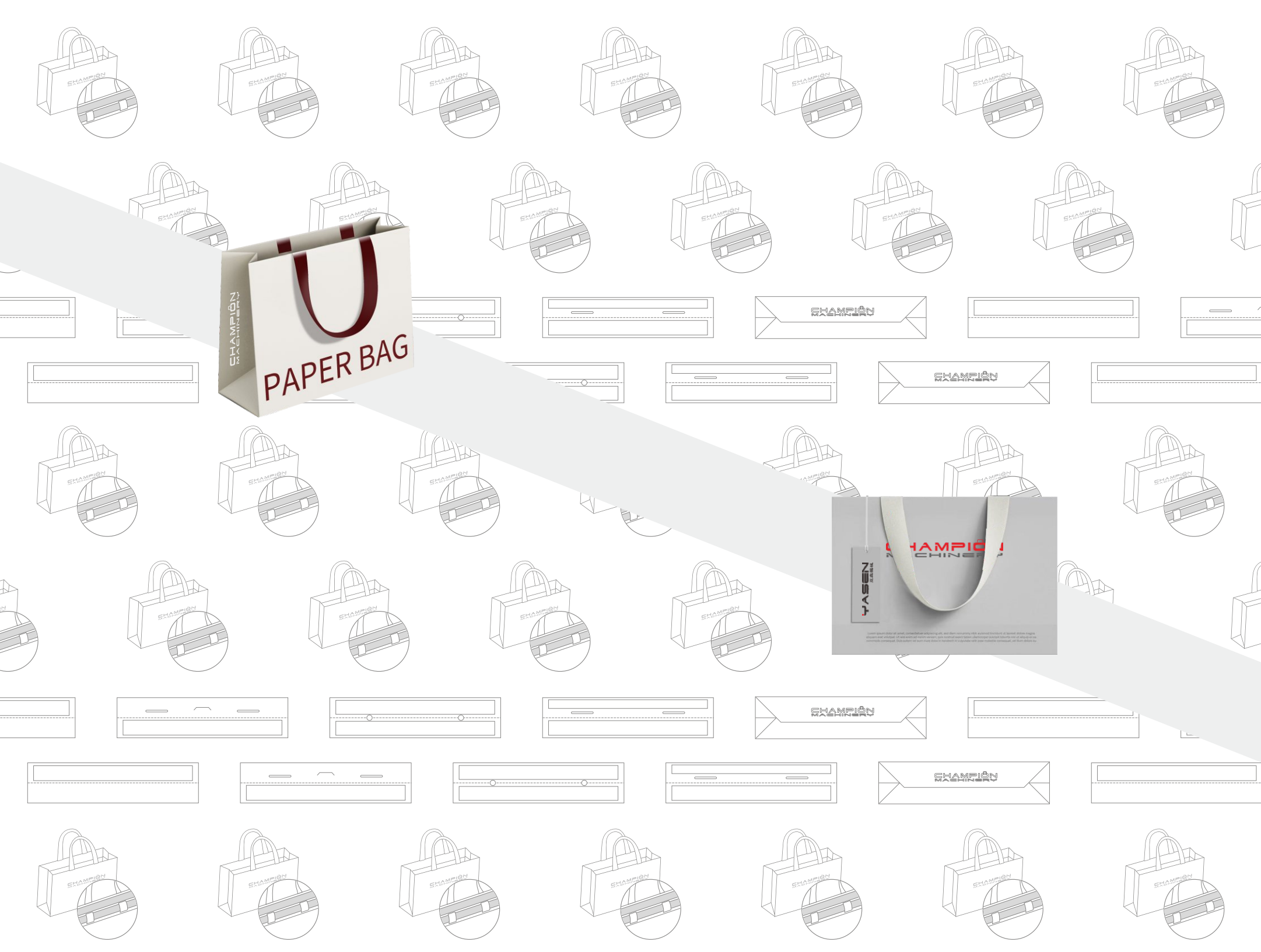
前工序 (刀模压线) 需压足折边位, 且压痕深度可实现手工盲折。
Punching And Creasing Should Support Easy Blind Manual Top Folding.

风琴上下重叠位公差范围: $\pm 2\text{mm}$

Gusset Top Folding Aligning Tolerance: $\pm 2\text{mm}$

头卡 / 底卡尺寸公差范围: $\pm 1\text{mm}$

Tolerance Of Top Cards/bottom Reinforcement: $\pm 1\text{mm}$



CHAMPION
PAPER BAG

CHAMPION
CHINESE
YASSEN

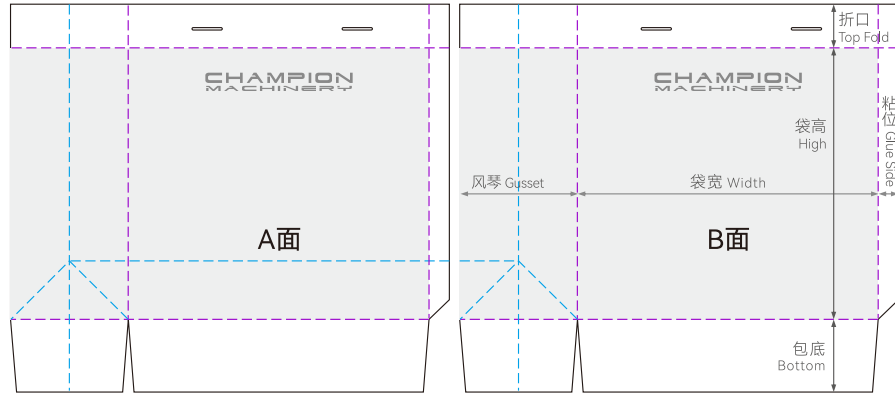
双拼/单张开花底刀模图

Double Sheets Paper / Single Sheet Paper Die Cutter Mould



双拼纸袋刀模 / Double Sheets Mould

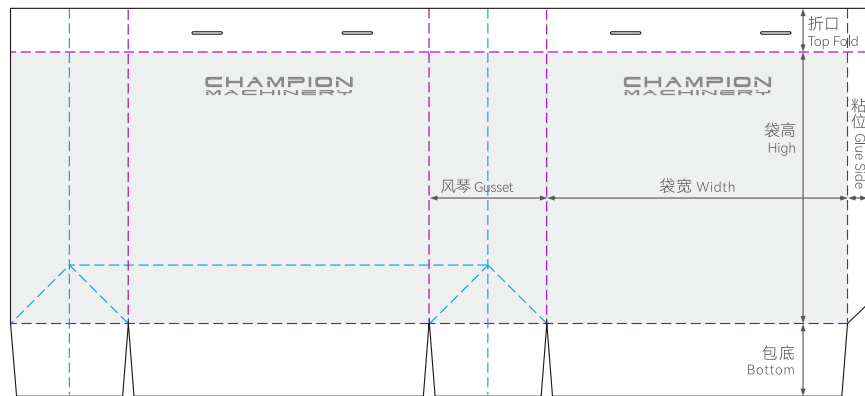
(右手位)



袋宽 / Width	<input type="text"/>	袋高 / High	<input type="text"/>	风琴 / Gusset	<input type="text"/>
折口 / Top Fold	<input type="text"/>	包底 / Bottom	<input type="text"/>	粘位 / Glue Side	<input type="text"/>

单张纸袋刀模 / Single Sheet Mould

(右手位)



袋宽 / Width	<input type="text"/>	袋高 / High	<input type="text"/>	风琴 / Gusset	<input type="text"/>
折口 / Top Fold	<input type="text"/>	包底 / Bottom	<input type="text"/>	粘位 / Glue Side	<input type="text"/>

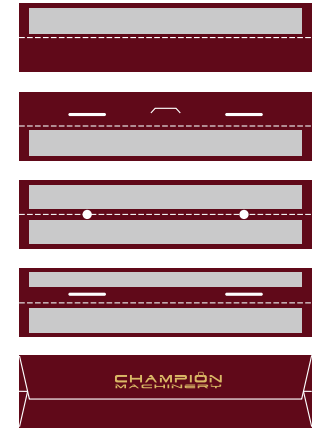
图中黑色为切断线, 紫色为正压线, 蓝色为反压线灰色为成品区

Black Is The Cut-off Line, Purple Is The Positive Pressure Line, And Blue Is The Negative Pressure Line, Gray is the finished paper bag area

纸袋展示 / Paper Bag



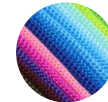
袋头 / 袋底展示 / Bag Head / Bag Bottom Showing



绳子样式 / Rope



棉绳
Cotton Rope



尼龙绳
Nylon Rope



三股绳
Three-strand Rope



棉纱绳
Cotton Yarn Rope



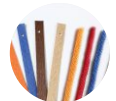
丝带
Ribbon



缎带
Ribbon



牛皮纸绳
Kraft Paper Rope



针通纸绳 / 纸排绳
Needle Paper String / paper String

头卡 / Top Card Board



底卡 / Bottom Card Board



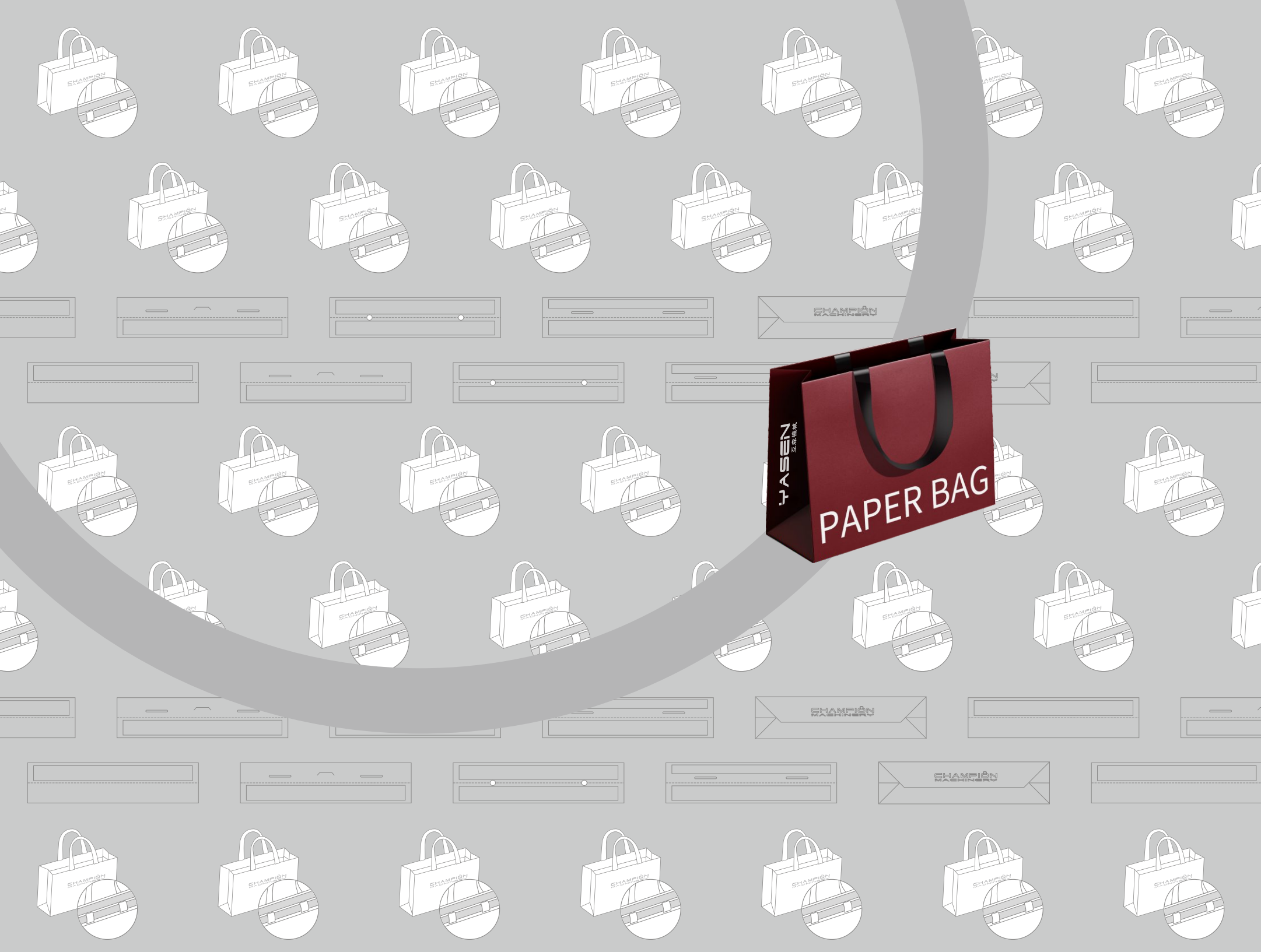
前工序 (刀模压线) 需压足折边位, 且压痕深度可实现手工盲折。
Punching And Creasing Should Support Easy Blind Manual Top Folding.

风琴上下重叠位公差范围: $\pm 2\text{mm}$

Gusset Top Folding Aligning Tolerance: $\pm 2\text{mm}$

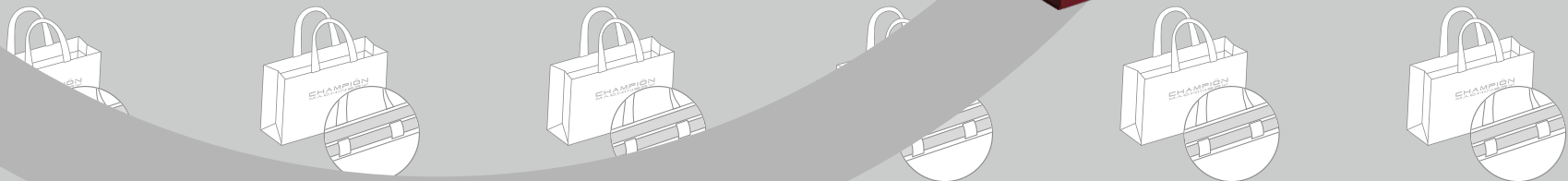
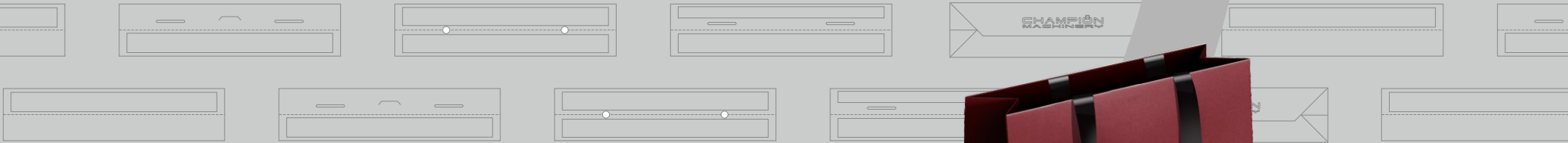
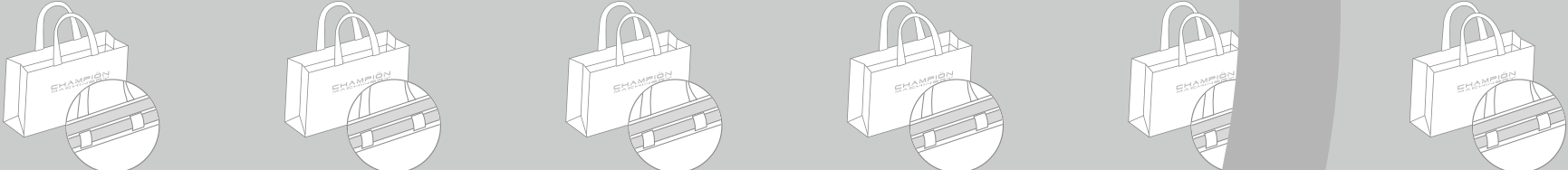
头卡 / 底卡尺寸公差范围: $\pm 1\text{mm}$

Tolerance Of Top Cards/bottom Reinforcement: $\pm 1\text{mm}$



YASEN
亞森有限公司

PAPER BAG



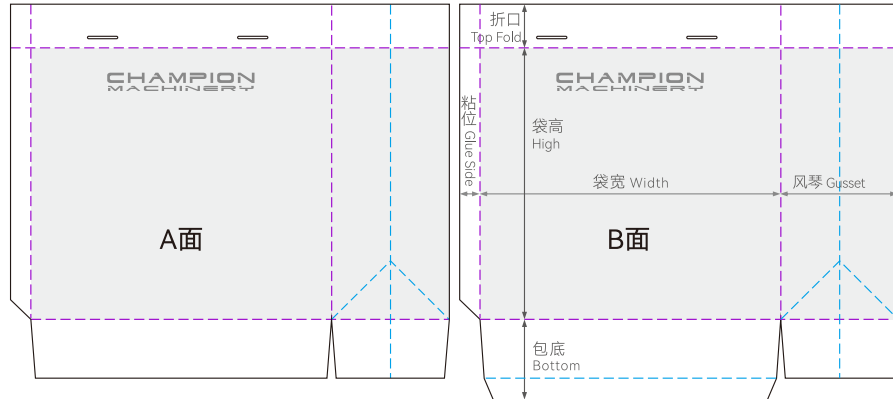
双拼/单张套模纸袋刀模图

Double / Single European (Japanese) Bottom Die-Cutting Pattern



双拼套模纸袋刀模 / Double Sheets Mould

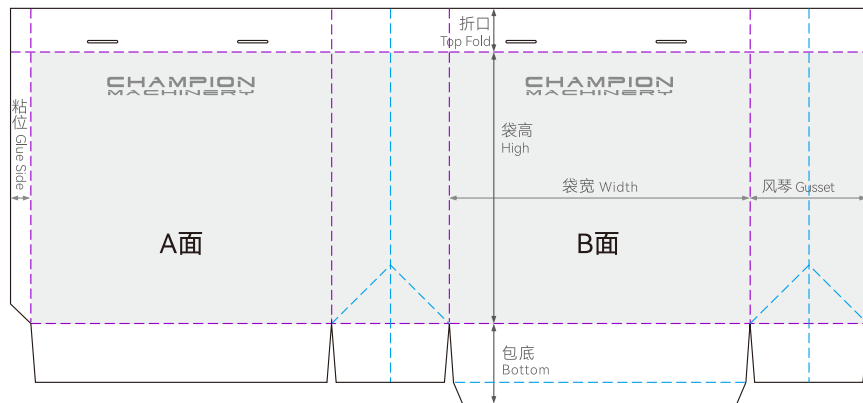
(左手位)



袋宽 / Width	<input type="text"/>	袋高 / High	<input type="text"/>	风琴 / Gusset	<input type="text"/>
折口 / Top Fold	<input type="text"/>	包底 / Bottom	<input type="text"/>	粘位 / Glue Side	<input type="text"/>

单张套模纸袋刀模 / Single Sheets Mould

(左手位)



袋宽 / Width	<input type="text"/>	袋高 / High	<input type="text"/>	风琴 / Gusset	<input type="text"/>
折口 / Top Fold	<input type="text"/>	包底 / Bottom	<input type="text"/>	粘位 / Glue Side	<input type="text"/>

图中黑色为切断线, 紫色为正压线, 蓝色为反压线灰色 为成品区

Black Is The Cut-off Line, Purple Is The Positive Pressure Line, And Blue Is The Negative Pressure Line, Gray is the finished paper bag area

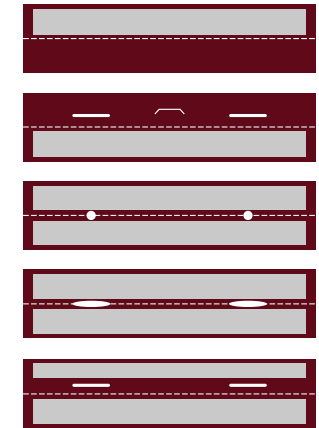
纸袋展示

Paper Bag



袋头 / 袋底展示

Bag Head / Bag Bottom Showing



绳子样式 / Rope



棉绳
Cotton Rope



尼龙绳
Nylon Rope



三股绳
Three-strand Rope



棉纱绳
Cotton Yarn Rope



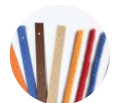
丝带
Ribbon



缎带
Ribbon



牛皮纸绳
Kraft Paper Rope



针通纸绳 / 纸排绳
Needle Paper String / paper String

头卡 / Top Card Board



底卡 / Bottom Card Board



前工序 (刀模压线) 需压足折边位, 且压痕深度可实现手工盲折。

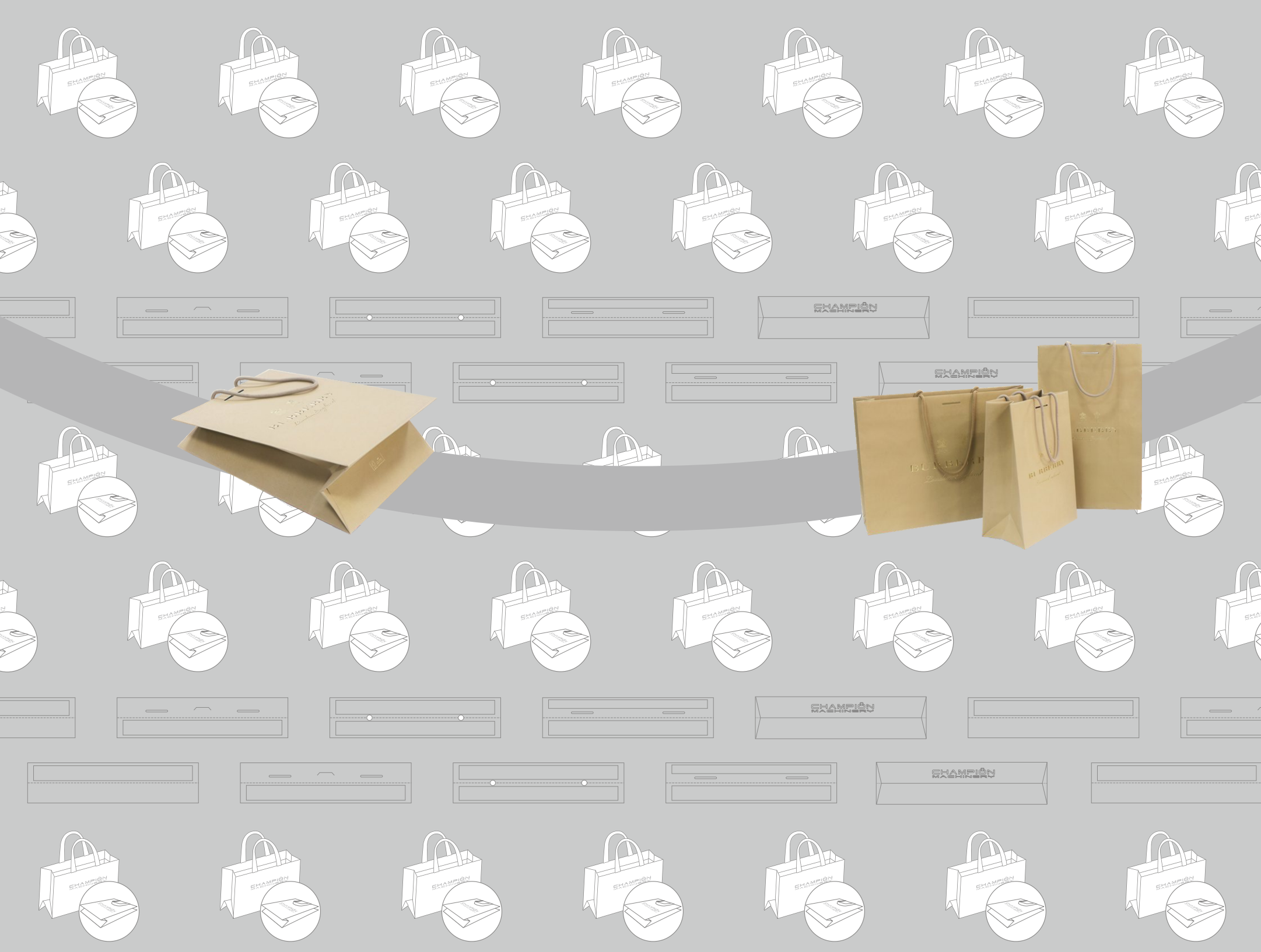
Punching And Creasing Should Support Easy Blind Manual Top Folding.

风琴上下重叠位公差范围: $\pm 2\text{mm}$

Gusset Top Folding Aligning Tolerance: $\pm 2\text{mm}$

头卡 / 底卡尺寸公差范围: $\pm 1\text{mm}$

Tolerance Of Top Cards/bottom Reinforcement: $\pm 1\text{mm}$



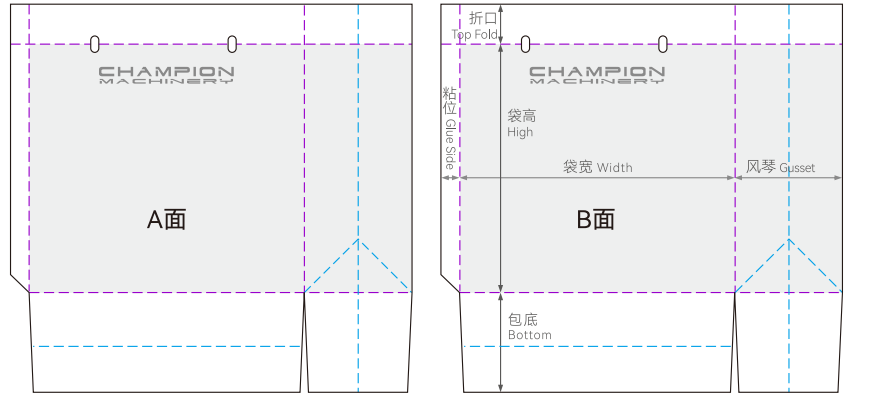
无底卡套模袋刀模图

No Bottom Card Paper Bag With Mould



双拼套模纸袋刀模 / Double Sheets Mould

(左手位)

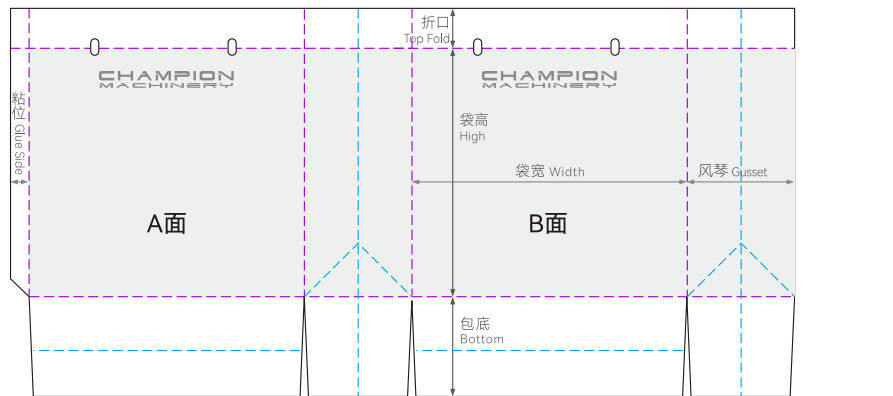


袋宽 / Width 袋高 / High 风琴 / Gusset

折口 / Top Fold 包底 / Bottom 粘位 / Glue Side

单张套模纸袋刀模 / Single Sheets Mould

(左手位)



袋宽 / Width 袋高 / High 风琴 / Gusset

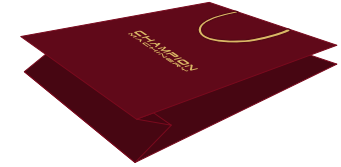
折口 / Top Fold 包底 / Bottom 粘位 / Glue Side

图中黑色为切断线, 紫色为正压线, 蓝色为反压线 灰色 为成品区

Black Is The Cut-off Line, Purple Is The Positive Pressure Line, And Blue Is The Negative Pressure Line, Gray is the finished paper bag area

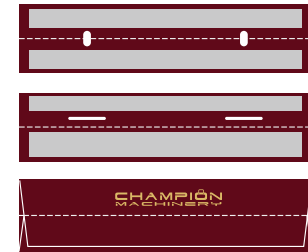
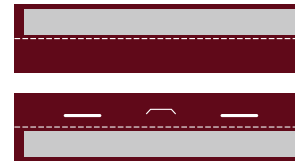
纸袋展示

Paper Bag



袋头 / 袋底展示

Bag Head / Bag Bottom Showing



绳子样式 / Rope



针通纸绳 / 纸排绳
Needle Paper String / paper String

头卡 / Top Card Board



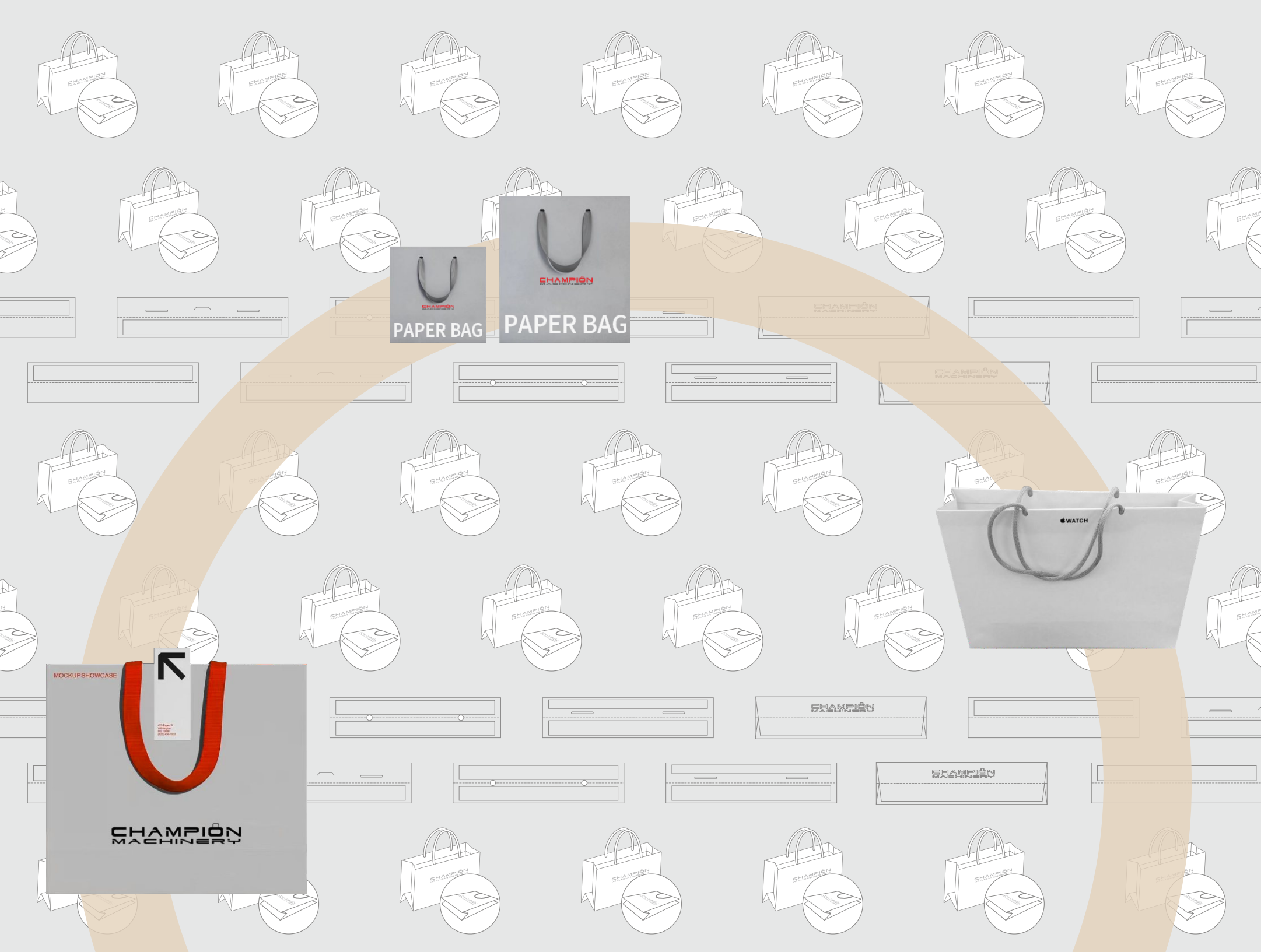
前工序 (刀模压线) 需压足折边位, 且压痕深度可实现手工盲折。
Punching And Creasing Should Support Easy Blind Manual Top Folding.

风琴上下重叠位公差范围: $\pm 2\text{mm}$

Gusset Top Folding Aligning Tolerance: $\pm 2\text{mm}$

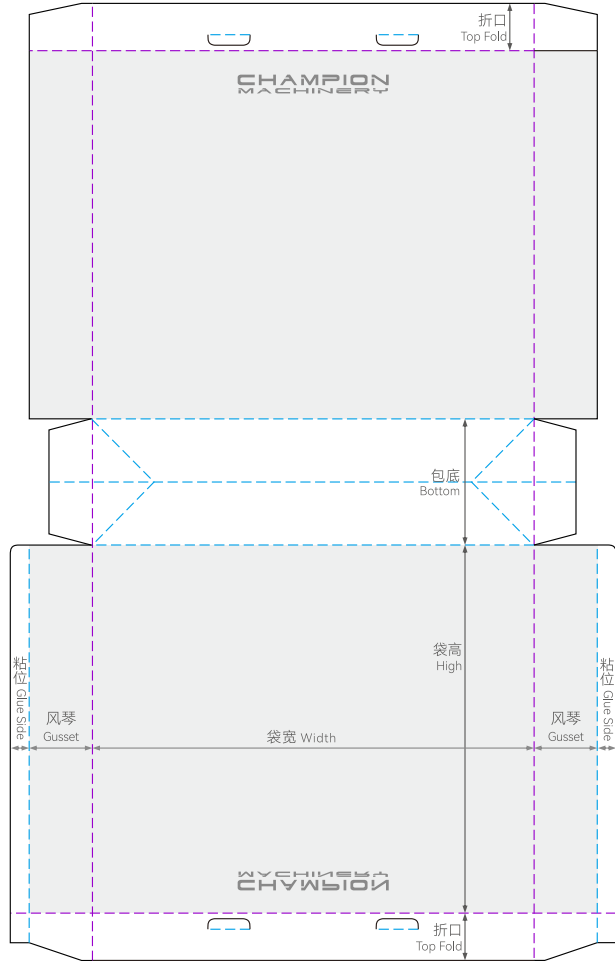
头卡 / 底卡尺寸公差范围: $\pm 1\text{mm}$

Tolerance Of Top Cards/bottom Reinforcement: $\pm 1\text{mm}$



无腰线刀模图

Non-creasing Line Paper Bag



图中黑色为切断线, 紫色为正压线, 蓝色为反压线灰色为成品区

Black Is The Cut-off Line, Purple Is The Positive Pressure Line, And Blue Is The Negative Pressure Line, Gray is the finished paper bag area

纸袋展示

Double Sheets Paper



袋头展示

Bag Head Display



绳子样式 / Rope Style



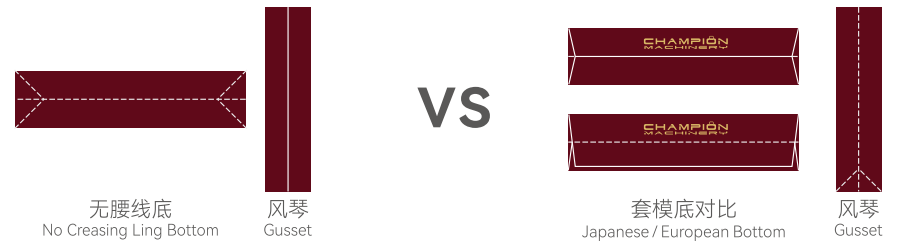
丝带
Ribbon

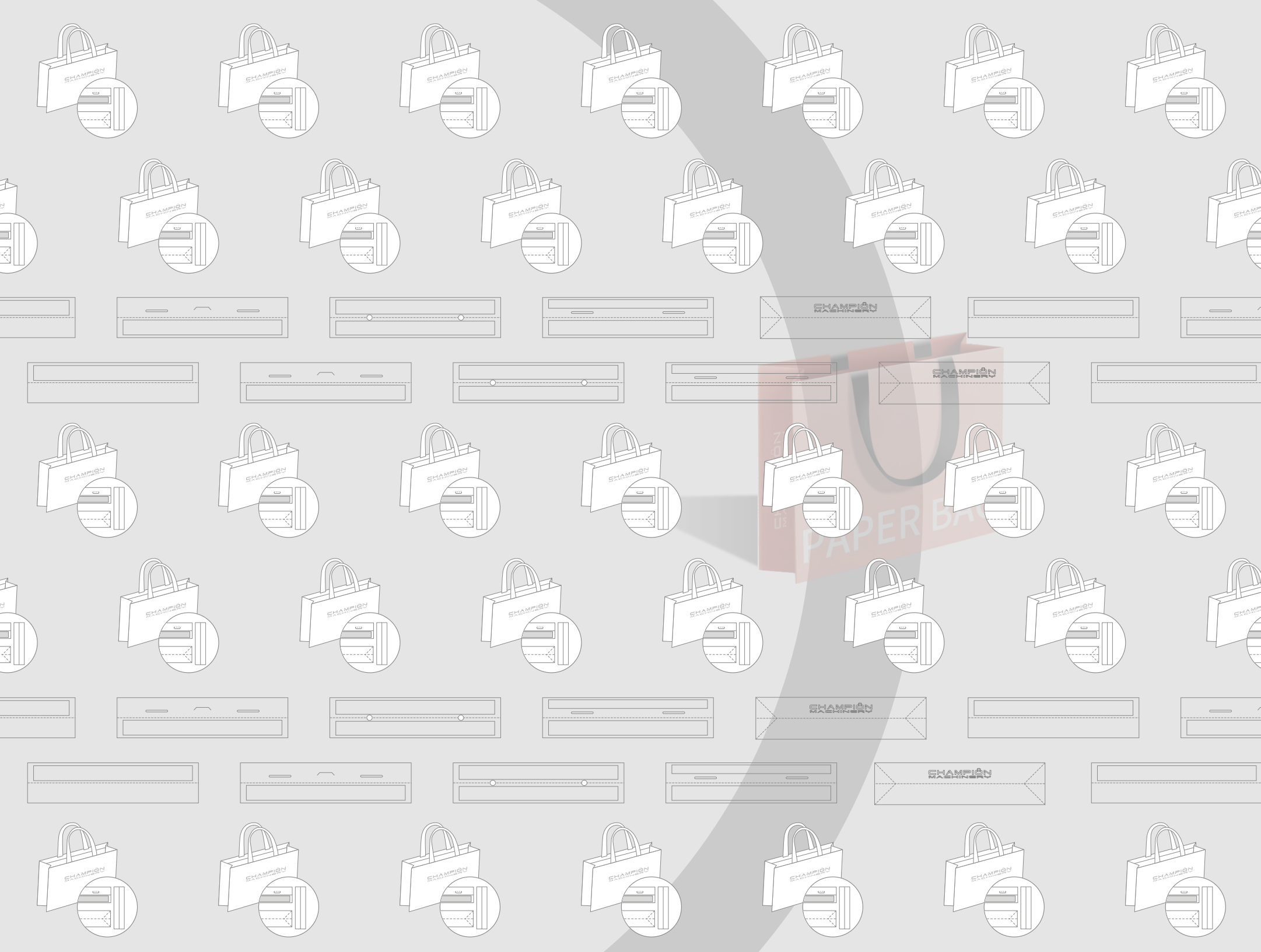
头卡 / Top Card Board



与正统日本 / 欧式底对比

Compared With The Japanese / European Bottom





印刷常识

Printing Knowledge

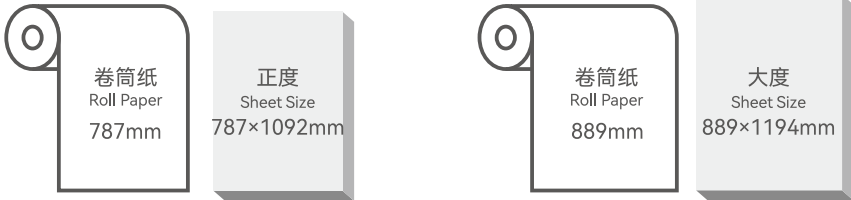
纸张色令 / Paper Color Order

纸最常见有2种规格:

There Are Two Most Common Types Of Paper:

(1). 正度纸: 787×1092mm
Size paper: 787×1092mm

(2). 大度纸: 889×1194mm
Size paper: 889×1194mm



▶ 印刷计量单位, 以500张全开纸单面印一色计。
The unit of measurement for printing is 500 sheets of full-size paper printed in one color on one side.

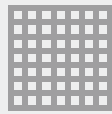
特种纸印刷纹理要求 / Texture Requirements For Special Paper Printing



● 横纹
Horizontal Stripes

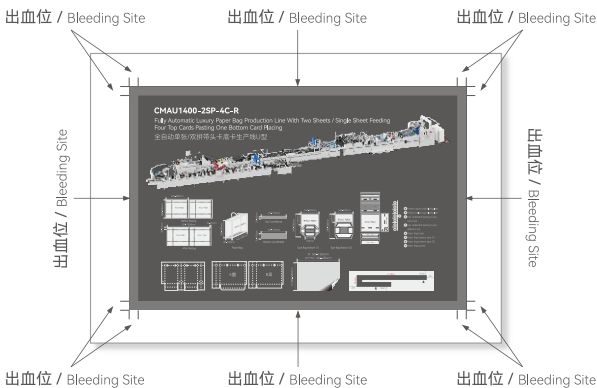


● 竖纹
Vertical Lines



● 无要求
No Requirement

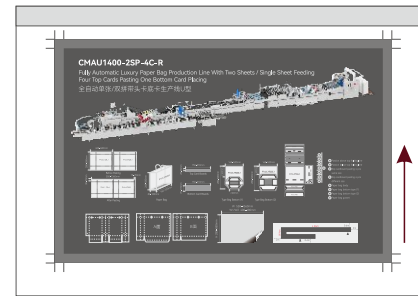
纸张出血位 / Paper Bleed



印刷时为保留画面有效内容预留出的方便裁切的方便。以避免裁切后的成品露白边或裁到内容。

The Part Reserved For Easy Cutting To Preserve The Effective Content Of The Picture During Printing. This Is To Avoid White Edges Or Cutting Of The Content After Cutting.

纸张咬口 / Paper Bite



5~15mm

印刷机进纸夹住的位置, 距离5~15mm之间。咬口位无法印刷, 无法着墨区域。

The Position Where The Paper Feed Of The Printing Machine Is Clamped Is Between 5 And 15 Mm. The Bite Position Cannot Be Printed And The Area Cannot Be Inked.

纸张开数 / Paper size

4开/4 Open		对开/Folio
16开/16 Open		
64开/64 Open	32开/32 Open	
8开/8 Open		

正度(未裁切全张 787mm x 1092mm)

- 正对开: 520mm x 740mm
- 正4开: 370mm x 520mm
- 正8开: 260mm x 370mm
- 正16开: 185mm x 260mm
- 正32开: 130mm x 185mm
- 正64开: 92mm x 130mm

大度(未裁切全张 889mm x 1194mm)

- 大对开: 570mm x 840mm
- 大4开: 420mm x 570mm
- 大8开: 285mm x 420mm
- 大16开: 210mm x 285mm
- 大32开: 142mm x 220mm
- 大64开: 110mm x 142mm

🛍️ 手提袋尺寸 / Paper Bag Size

手提袋的尺寸我们常见的有大2开手提袋，正2开手提袋，大3开手提袋，正3开手提袋这几种大小不同的尺寸。

The Sizes Of Handbags We Commonly See Include Large 2-Top Fold Handbags, Regular 2-Top Fold Handbags, Large 3-Top Fold Handbags, And Regular 3-Top Fold Handbags.

大2开手提袋: 330mm(宽) x 450mm (高) x 90mm (侧面)

正2开手提袋: 280mm(宽) x 420mm (高) x 80mm (侧面)

大3开手提袋: 250mm(宽) x 350mm (高) x 80mm (侧面)

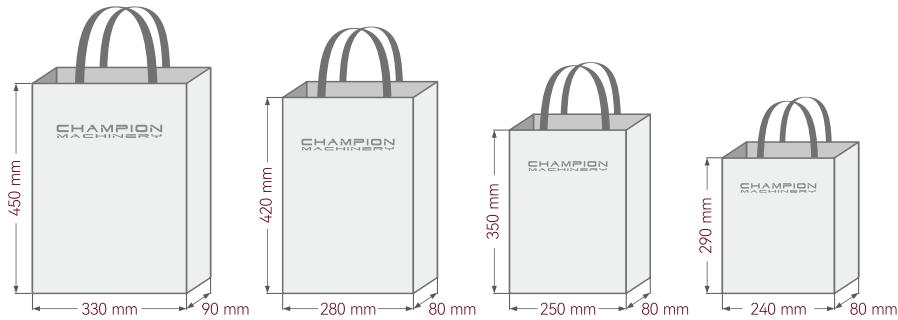
正3开手提袋: 240mm(宽) x 290mm (高) x 80mm (侧面)

Large 2-opening Handbag: 330mm (Width) x 450mm (height) * 90mm (Side)

Straight 2-opening Handbag: 280mm (Width) x 420mm (height) x 80mm (Side)

Large 3-opening Handbag: 250mm (Width) x 350mm (height) x 80mm (Side)

Straight 3-opening Handbag: 240mm (Width) x 290mm (height) x 80mm (Side)



🛍️ 纸张克重&应用 / Paper Weight & Application



🛍️ 纸张材料 / Paper Material

纸张材料: 白卡纸、铜版纸、灰底白板纸、白底白板纸、黄牛皮纸、白牛皮纸黑卡纸、特种纸、铝箔纸等。

纸张厚度: 100-120克-128克-157克-190克-210克-230克-250克-300克-350克。

手提袋绳子: 棉绳、尼龙绳、三股绳、棉纱绳、丝带、缎带、以及牛皮纸绳。

白卡纸: 白卡纸坚挺厚实，有较高的挺度、耐破度和平滑度，纸面平整，用白卡纸印刷出来的纸袋，颜色饱满，纸的质感也非常好，是您定做的首选。

铜版纸: 铜版纸的特点在于纸面非常光洁平整，白度高，平滑度高，光泽度好还使印出的图形、画面具有立体感，常用的厚度有128克-300克，铜板纸印刷的效果和白卡纸一样。

白牛皮纸: 耐破度高，韧性好，高强度，匀度厚度色象稳定，100%纯木浆制造，环保无毒，可环保再生利用，纸韧性很好，不用膜，广泛用于环保型服装手提袋、高档购物袋等。

牛皮纸: 又称本色牛皮纸。具有很高的拉力，韧度很高，通常呈棕黄色，抗撕裂强度、破裂和动态强度很广泛用于购物袋、信封等。

黑卡纸: 为一种特种纸，双面黑。特点是纸质细腻，透心黑，坚挺厚实、耐折度好、表面平整光滑，挺度好，拉力好，耐破度高等，适合烫金、烫银等。

Paper Materials: White Cardboard, Coated Paper, Gray-bottom White Board Paper, White-bottom White Board Paper, Yellow Kraft Paper, White Kraft Black Cardboard, Special Paper, Aluminum Foil, Etc.

Paper Thickness: 100-120g-128g-157g-190g-210g-230g-250g-300g-350g.

Handbag Rope: Cotton Rope, Nylon Rope, Three-strand Rope, Cotton Yarn Rope, Ribbon, Satin Ribbon, And Kraft Paper Rope.

White Cardboard: White Cardboard Is Firm And Thick, With High Stiffness, Burst Resistance And Smoothness, And The Paper Surface Is Flat. The Paper Bags Printed On White Cardboard Are Full Of Color And The Texture Of The Paper Is Also Very Good. It Is Your First Choice For Customization.


Coated Paper: The Characteristics Of Coated Paper Are That The Paper Surface Is Very Smooth And Flat, With High Whiteness, High Smoothness, Good Glossiness, And It Also Makes The Printed Graphics And Pictures Have A Three-dimensional Sense. The Commonly Used Thickness Is 128g-300g. The Printing Effect Of Coated Paper Is The Same As That Of White Cardboard.

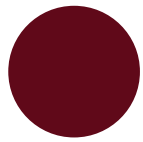
White Kraft Paper: High Burst Resistance, Good Toughness, High Strength, Uniform Thickness And Stable Color. It Is Made Of 100% Pure Wood Pulp, Environmentally Friendly And Non-toxic, And Can Be Recycled And Reused Environmentally. The Paper Has Good Toughness And Does Not Require Film. It Is Widely Used In Environmentally Friendly Clothing Handbags, High-end Shopping Bags, Etc.

Kraft Paper: Also Known As Natural Kraft Paper. It Has High Tensile Strength And High Toughness. It Is Usually Brown-yellow In Color. It Has High Tear Resistance, Rupture Resistance And Dynamic Strength. It Is Widely Used In Shopping Bags, Envelopes, Etc.

Black Cardboard: It Is A Special Paper, Double-sided Black. The Paper Is Characterized By Fine Texture, Transparent Black, Firm And Thick, Good Top Folding Resistance, Smooth Surface, Good Stiffness, Good Tensile Strength, High Tear Resistance, Etc. It Is Suitable For Hot Stamping, Hot Stamping, Etc.



 纸张表面处理工艺 / Paper Surface Treatment Process



专色印刷
Spot Color Printing



压凹凸
Pressing Concave and Concave



压痕
Indentation



模切
Die Cutting



烫金
Hot Stamping



烫银
Silver Hot Stamping



覆膜
Lamination




UV



上光
Glazing



烫镭射
Laser Perm

 精品纸袋生产所需材料 / Luxury Paper Bag Materials Required



双拼纸张
Double Sheets Paper
120-300gsm



单拼纸张
Single Sheet Paper
120-300gsm



头卡/底卡
Top Cardboards
190-600gsm
Bottom Card Boardboards
200-350gsm




手挽绳
Handles
190-300gsm

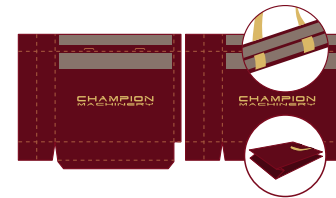


热熔胶
Hot Melt Glue



水性胶
Water Based Glue

 纸袋穿绳样式 / Paper Bag String



套模纸袋穿丝带打胶
M Bottom Paper Bag With Ribbon



纸袋穿丝带打胶
Paper Bag With Ribbon



纸袋穿丝带打结
Paper Bag With Ribbon Knot



纸袋穿单丝带绳打结
Paper Bag With Ribbon



纸袋穿棉绳打胶
袋口折线
Paper Bag With Cotton Rope In The Top Middle Line



纸袋穿棉绳打胶
袋口里面
Paper Bag With Cotton Rope Inside



纸袋穿棉绳打结
Paper bag with rope knot



纸袋穿勾头绳
Paper Bag With Rope Insert



丝带穿勾头绳
Paper Bag With Ribbon Insert

Dior



CELINE

GUERLAIN
PARIS

GIVENCHY

TIFFANY & Co.

Hennessy

TAGHeuer
SWISS MADE SINCE 1860

BVLGARI

GUERLAIN
PARIS

FENDI

MOËT & CHANDON
CHAMPAGNE

SEPHORA



benefit
SAN FRANCISCO

dodo

Prioni

BOTTEGA
VENETA

Pomellato

Alexander
McQUEEN

BALENCIAGA

LINDBERGG

BOUCHERON
PARIS DEPUIS 1858



qeelin

GUCCI

dunhill

MONTBLANC

Van Cleef & Arpels

PIAGET

IWC
SCHAFFHAUSEN

Cartier

VACHERON CONSTANTIN

JAEGER-LECOULTRE

VERSACE

CHANEL

Chloé

BURBERRY
ESTABLISHED 1856

JO MALONE
LONDON

GIVENCHY

Calvin Klein

BVLGARI

HR
HELENA RUBINSTEIN

CLARINS
PARIS

sisley
PARIS

fresh

VERSACE

clé de peau
BEAUTÉ

SHISEIDO
GINZA TOKYO

ESTÉE LAUDER

GUERLAIN
PARIS

LANCÔME
PARIS

KOSÉ

CLINIQUE

ROLEX

AUDEMARS PIGUET
Le maître de l'horlogerie depuis 1875

SWAROVSKI

OMEGA

GA

Breguet
Depuis 1775

RICHARD MILLE

ALEXANDER WANG

LONGINES

TISSOT

HUBLOT

MONTBLANC

BREITLING
1884

BLANCPAIN
MANUFACTURE DE HAUTE HORLOGERIE
宝珀

CASIO

PATEK PHILIPPE
GENEVE

ZARA

POLO RALPH LAUREN

PANDORA

THE NORTH FACE

HERMÈS
PARIS

ARC'TERYX

SK-II

UNI QLO

FILA



MLB

PUMA
puma.com

new balance

adidas

MOËT & CHANDON
CHAMPAGNE

Alexander
McQUEEN

MONTBLANC

benefit
SAN FRANCISCO

Why Choose

ECO-FRIENDLY LUXURY PAPER BAGS

Eco-Friendly Luxury Paper Bags are **recyclable, compostable, sustainable or biodegradable.**

- Our Top Recommendations to Create the Most Eco-Friendly Luxury Paper Bags.
- Choose paper sourced from sustainably managed forests, such as FSC-certified paper.
- Opt for recycled paper (created using post-consumer-waste), which is also recyclable (the percentage of recycled content can vary in different papers from 20–100%).
- Use die-cut handles (or cut-out handles) instead of ribbon handles, which uses less material.
- Use uncoated stock or kraft paper (they don't contain an added lamination film layer).
- Use a printed logo on your bags, rather than foil, which is more difficult to recycle.
- Select zero emission papers produced with green energy.
- Use one colour designs, as full-colour printing requires less environmentally friendly coated paper and lamination.
- Clever designs to make paper bags more eco-friendly and cost-effective.

Paper:

Coated Art Paper : 200–300 gsm

Card Paper : 200–220 gsm

170–250 gsm Brown 100% Recycled Kraft Paper

180–300gsm Large range of eco-friendly, recycled and biodegradable papers

Handles: Polypropylene or Cotton Rope, Twisted Rope, Die Cut, Satin Ribbon, Grosgrain Ribbon, Cotton Herringbone Tape, Waxed Cotton Rope, Jute Rope, Twisted paper handles in white, black or natural colour

Finish: Gloss lamination, Matt lamination, Soft touch lamination, Metallic Lamination, Anti-Scratch Varnish

Print: Up to 4 colours screen print, litho printing, metallic printing. Pantone matched or full colour CMYK printing.

Extra Features: Hot Foil Stamping, Ribbon Bow Closure, Metal Eyelets, Printed Ribbon Handles, Inside Printing, Spot UV Varnish, Embossing/Debossing



100% COMPOSTABLE PAPER BAG



CompoStable / Sustainable /
Innovative / Earth Friendly

NOW YOUR BAG MANUFACTURING
SOLUTION IS READY →

DUST CATCHER USE



AIRSICK



DRINK TAKE AWAY



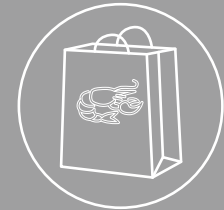
KICHEN WASTE



WET CARRY



FRESH SHOPPING



TEA/HERBS



COOKIES

