

## Beli Chan

Sales Manager

M: +86 139 2586 8276

WhatsApp: +86 139 2586 8276

E-mail: Beli@championbagmaker.com

MACHINERY MANUFACTURER OF **LUXURY PAPER BAGS**

CHAMPION MACHINERY MANUFACTURING CO.,LTD.

Add: 42#2and Longyan Industrial Avenue, Humen Town Dongguan City, China PR

Website: www.paper-bag-machine.com

**CHAMPION**  
MACHINERY



## Coffee Gong

Sales

M: +86 186 8118 5198

WhatsApp: +86 134 2327 5528

E-mail: sales8@championbagmaker.com

MACHINERY MANUFACTURER OF **LUXURY PAPER BAGS**

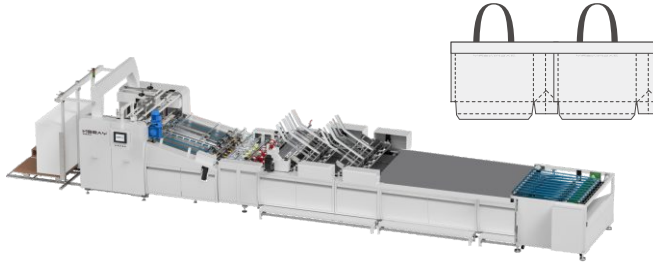
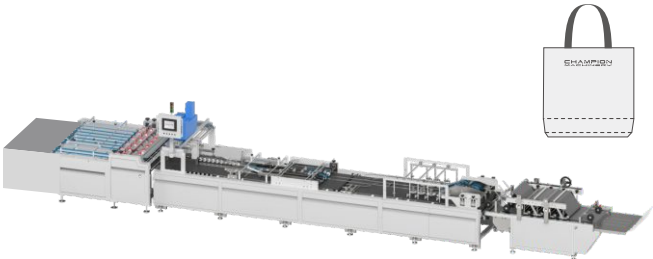
CHAMPION MACHINERY MANUFACTURING CO.,LTD.

Add: 42#2and Longyan Industrial Avenue, Humen Town Dongguan City, China PR

Website: www.paper-bag-machine.com

**CHAMPION**  
MACHINERY



Serial Number	Model	
Sept 1	<p><b>CMTF-1200TCR/1400TCR</b> Sheet Paper Pasting With 4pcs Top Cards+ Ribbon Insert In 纸袋单张贴头卡穿丝带机</p>	
Sept 2	<p><b>Manul Feeder</b> <b>1400/1600 Tube Maker</b> 手动送料纸袋糊筒机</p>	

## 目录 Contents

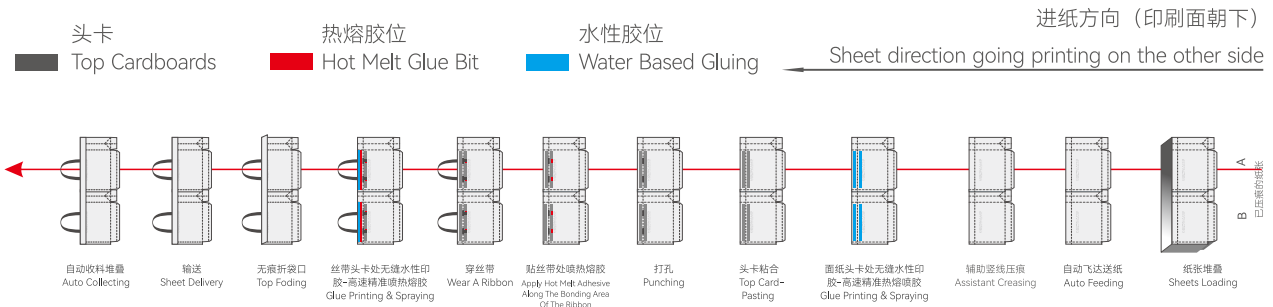
工艺流程图 Process Flowchart	-----	3
设备占地规划 Machine Floor Plan	-----	3
<b>CMTF-1200 TCR/1400TCR</b>	-----	4
工艺流程图 Process Flowchart	-----	4
机器说明 Machine Description	-----	5
主要技术参数 TechnicalData	-----	5
设备占地规划 Machine Floor Plan	-----	5
丝带款纸袋样式 Ribbon Paper Bag Style	-----	6
袋头打孔样式 Bag Head Punching Style	-----	6
丝带样式 Ribbon Style	-----	7
<b>Manul Feeder 1400 Tube Maker</b>	-----	8
工艺流程图 Process Flowchart	-----	8
参数示意图 Sheet Paper Data	-----	8
机器说明 Machine Description	-----	9
主要技术参数 TechnicalData	-----	9
设备占地规划 Machine Floor Plan	-----	9



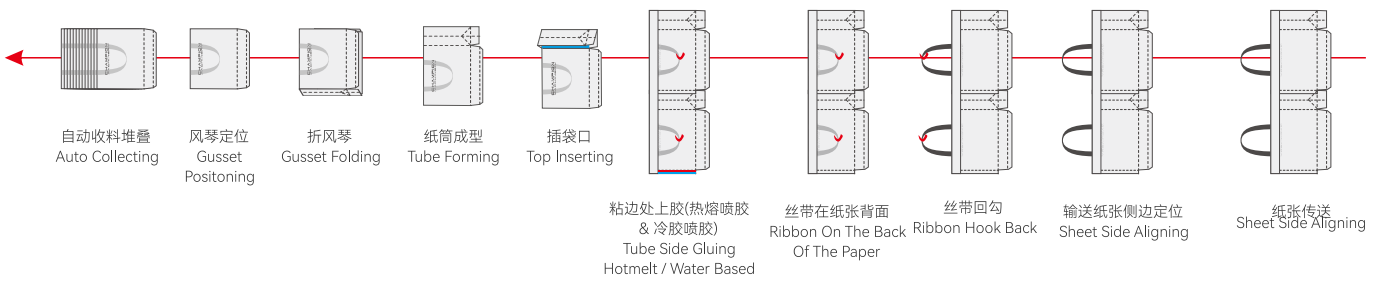
工艺流程图 Process Flowchart

**CMTF-1200TCR/1400TCR**

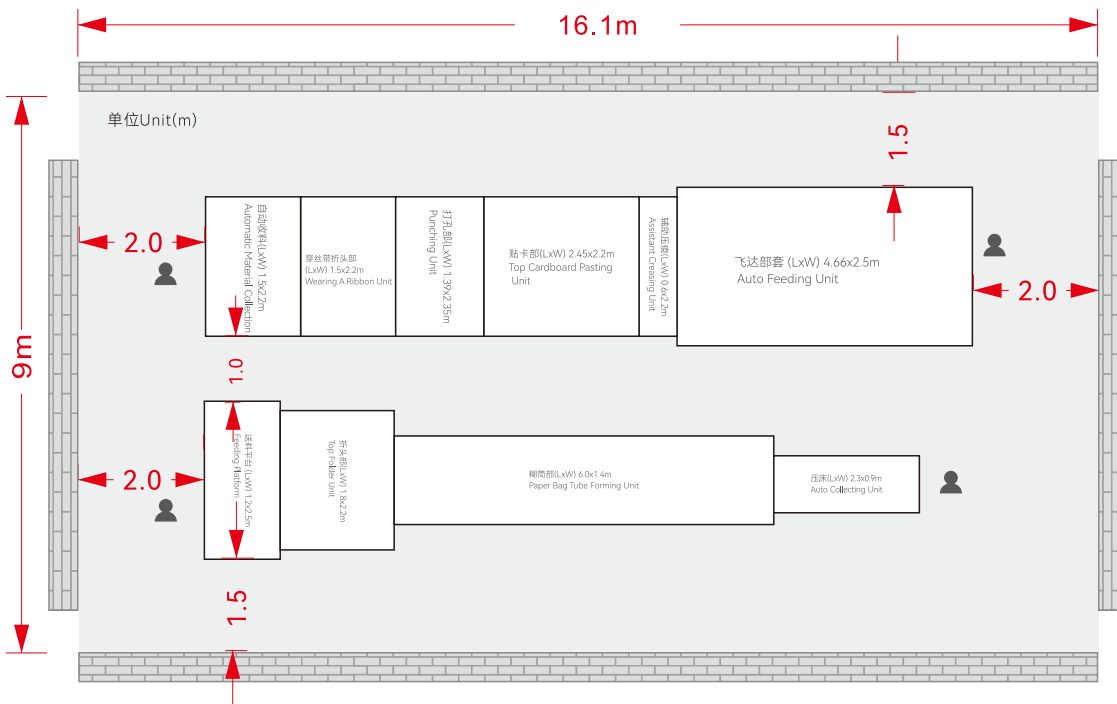
Sheet Paper Pasting With 4pcs Top Cards + Ribbon Insert In



**Manul Feeder 1400/1600 Tube Maker**

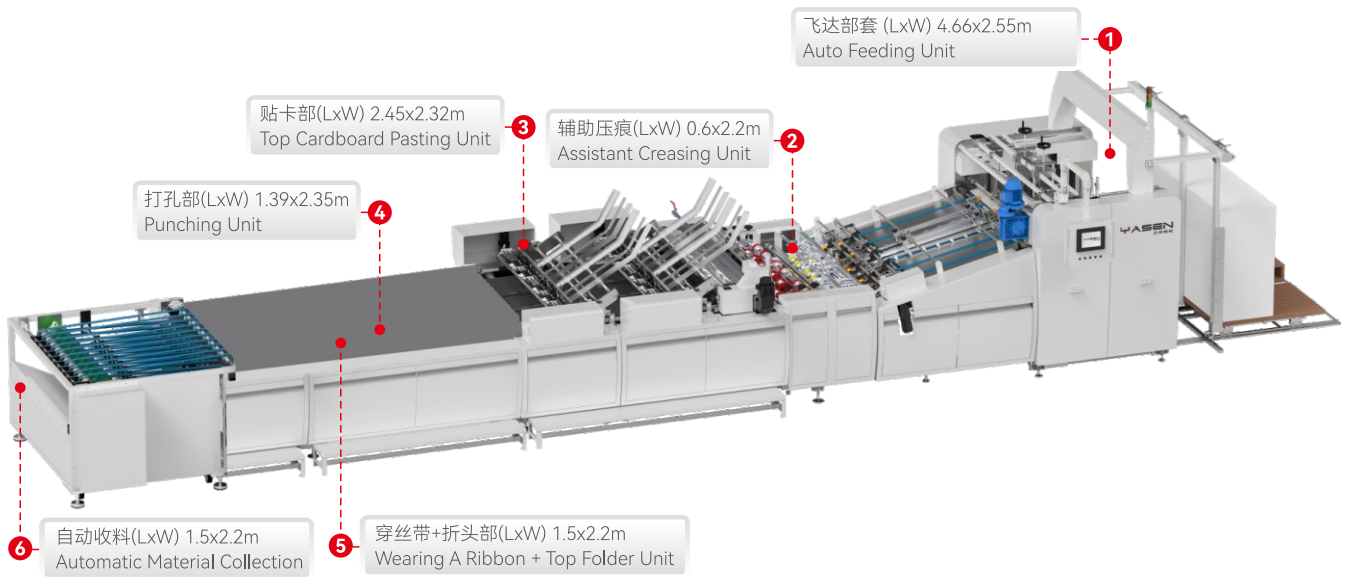


设备占地规划 Machine Floor Plan



# CMTF-1200TCR/1400TCR

Sheet Paper Pasting With 4pcs Top Cards + Ribbon Insert In  
纸袋单张贴头卡穿丝带机



## 工艺流程图 Process Flowchart

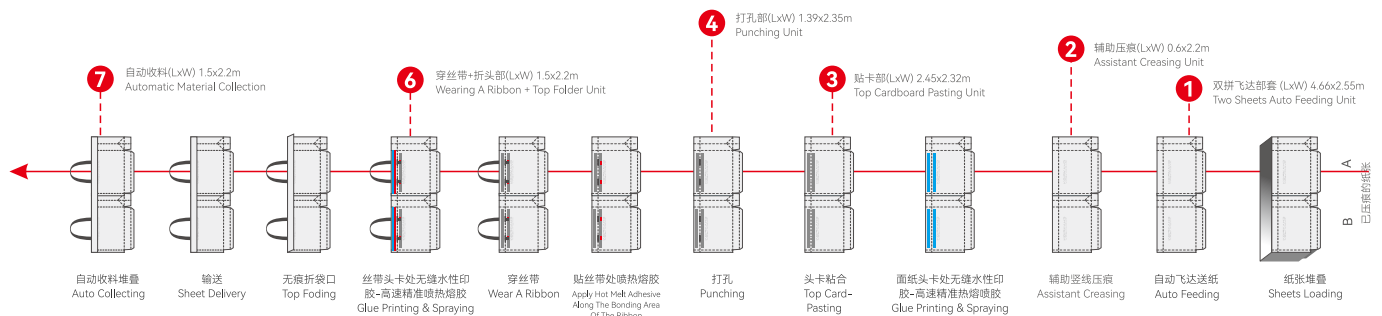
头卡  
Top Cardboards

热熔胶位  
Hot Melt Glue Bit

水性胶位  
Water Based Gluing

进纸方向 (印刷面朝下)

Sheet direction going printing on the other side





## 机器说明 Machine Description

针对人工穿丝带作业中存在的效率低下、质量波动大等痛点，我们全新研发推出单张贴头卡穿丝带折头机。该设备深度融合“全自动化智能控制、多功能一体集成、毫米级高精度贴合”三大核心技术优势，构建起覆盖原料处理到成品输出的全流程智能化生产体系。

设备较传统工艺生产效率明显提升，同时通过自动定位系统与自适应张力控制技术，将产品良率稳定控制在95%以上。其模块化设计支持快速切换不同规格纸袋生产，完美适配奢侈品包装、高端零售等领域的个性化定制需求，可为企业降本增效，助力实现从“制造”到“智造”的跨越式升级。

To address the inefficiencies and high quality fluctuations associated with manual ribbon threading, We have newly developed and launched a single-sheet headband threading and ribbon folding machine. This machine integrates three core technological advantages: fully automated intelligent control, multi-functional integration, and millimeter-level high-precision lamination. This creates a comprehensive intelligent production system, encompassing everything from raw material processing to finished product output.

This machine significantly improves production efficiency compared to traditional processes. Its automatic positioning system and adaptive tension control technology maintain a stable product yield of over 95%. Its modular design allows for rapid switching between different paper bag sizes, perfectly meeting the personalized customization needs of luxury packaging and high-end retail. This can help businesses reduce costs and increase efficiency, enabling a leap from "manufacturing" to "intelligent manufacturing."

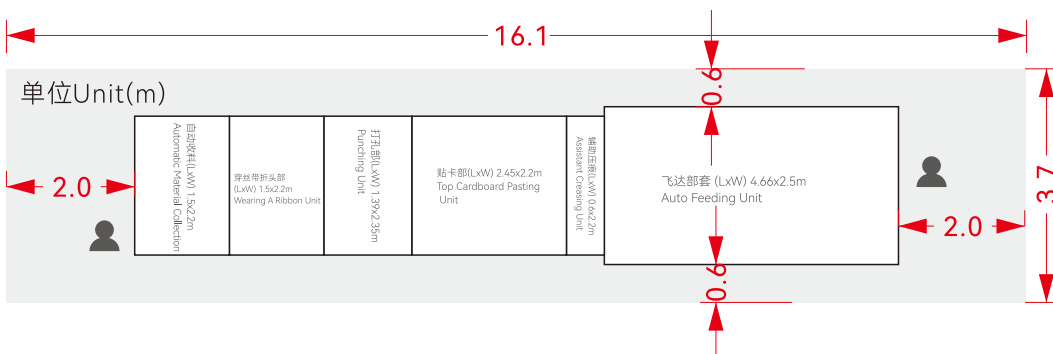


## 主要技术参数 Technical Data

纸张尺寸 Sheet Paper Size		
W进纸宽度范围	Sheet Paper Width	450-1160mm/1400TCR 550-1360mm/1600TCR
H进纸长度范围	Sheet Paper Length	300-580mm/1400TCR
适用纸张原材料和耗材 Suitable Paper Material & Glue & Handle		
牛皮纸	Kraft Paper	120-350gsm
铜版纸/覆膜纸	Coat Paper/ Laminated	157-250gsm
白卡纸	White Board Paper	157-300gsm
灰板纸	Grey Board Paper	157-300gsm
胶水	Glue	标配热熔胶，选配水性冷胶 Hot melt glue option water base glue
手提绳	Handle	纸手腕圆/扁，贴丝带，打头手提绳子/丝带 其他 Flat paper handle, twisted paper handle, tipping with rope or ribbon handle, Ribbon handles with top cardboard pasting glue fix of luxury paper bag
头卡 Top Cardboards		
头卡宽度	Top Cardboards Width	25-65mm
头卡长度	Top Cardboards Length	140-500mm/1400TCR 180-580mm/1600TCR
头卡克重	Top Cardboards Thickness	200-400gsm 4pcs / 200-600gsm 2 pcs
运行 Running		
速度	Speed	0-30 pcs/min
安装要求 Installation		
装机总功率	Total Power Supply	32KW
压缩空气	Compressed Air/ Capacity	6bar
储气罐能量	Air Tank Capacity	15m <sup>3</sup> /h

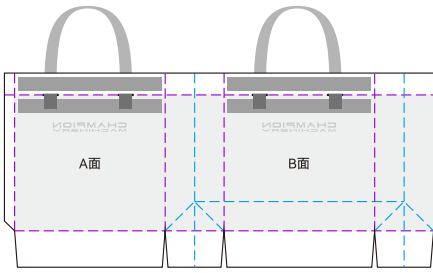


## 设备占地规划 Machine Floor Plan

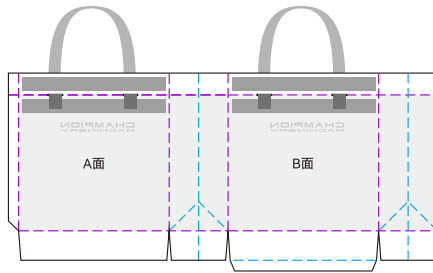




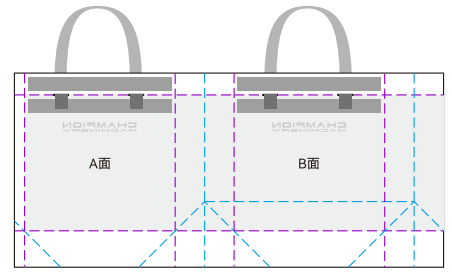
丝带款纸袋样式 Ribbon Paper Bag Style



开花底方形孔丝带款  
Japanese Base With Square  
Hole And Ribbon Pattern

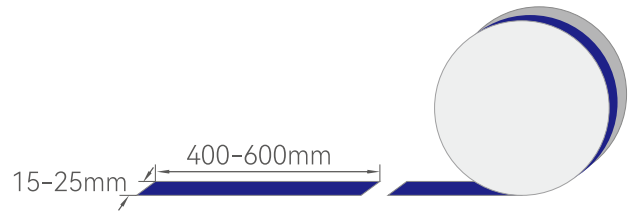


日本底椭圆孔丝带款  
Japanese Base With Oval  
Hole And Ribbon Pattern

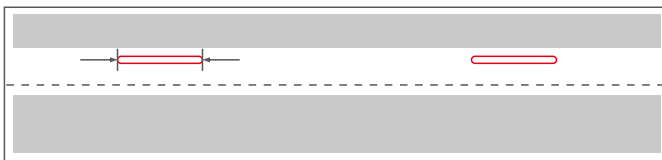


八字底方形孔丝带款  
Square Hole And Ribbon  
Pattern

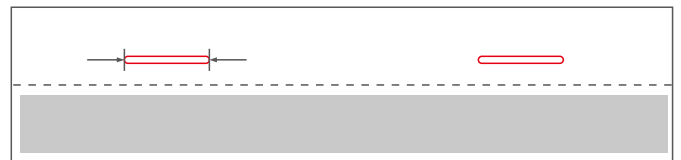
织带宽度: 15-25mm  
织带长度: 400-600mm  
Handle Width: 15-25mm  
Handle Length: 400-600mm



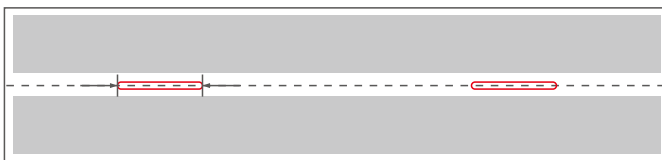
袋头打孔样式 Bag Head Punching Style



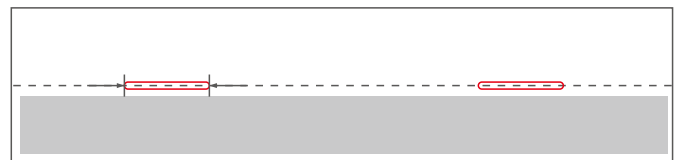
Size: 26mm x 3mm



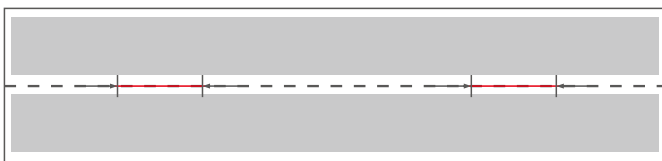
Size: 26mm x 3mm



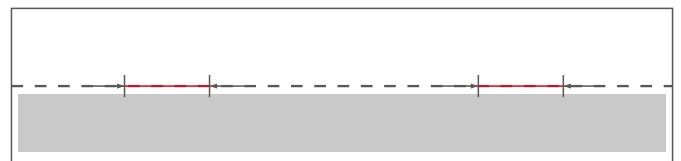
Size: 26mm x 3mm



Size: 26mm x 3mm



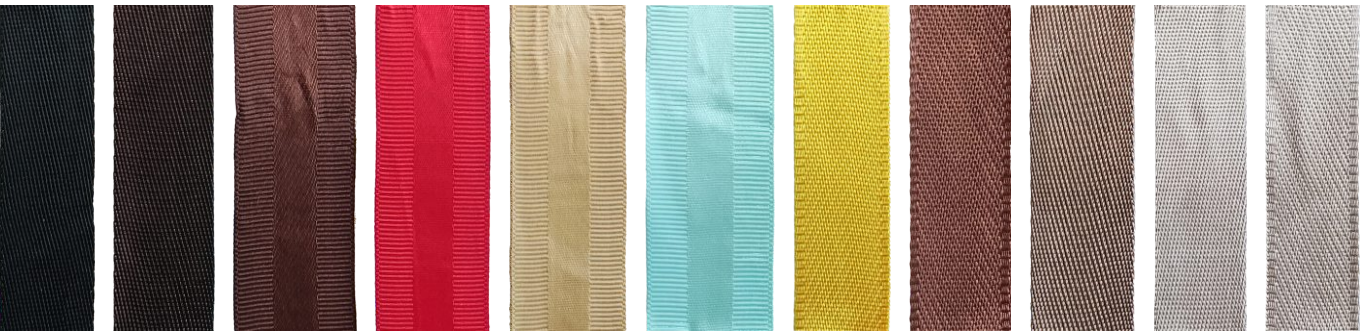
Size: 30mm



Size: 30mm

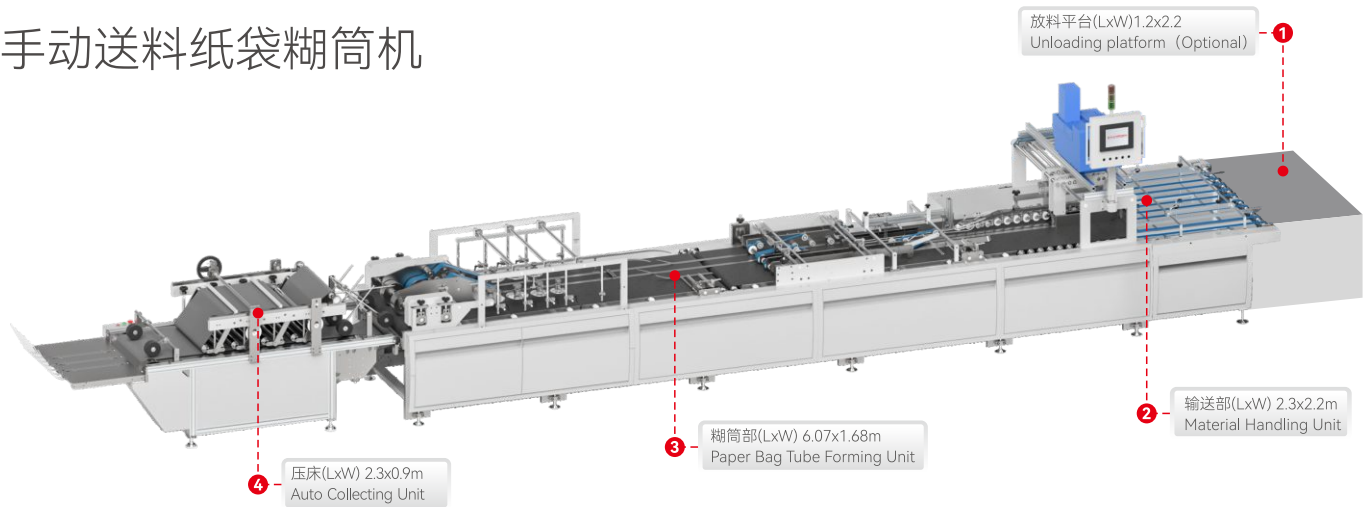


丝带样式 Ribbon Style

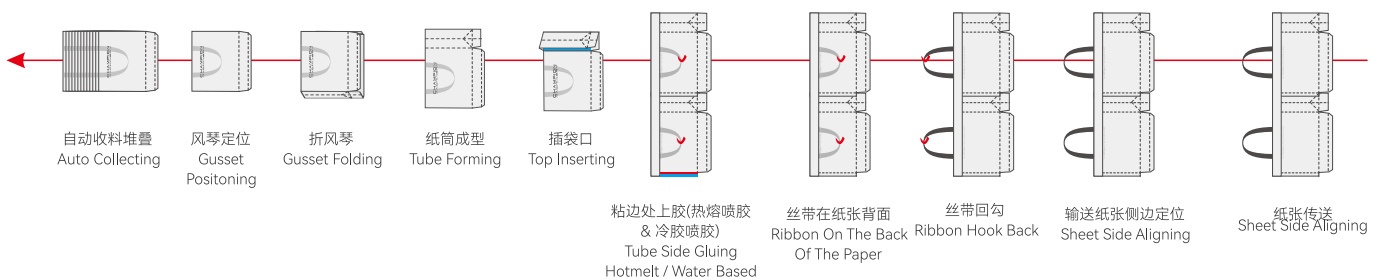


# Manul Feeder 1400 Tube Maker

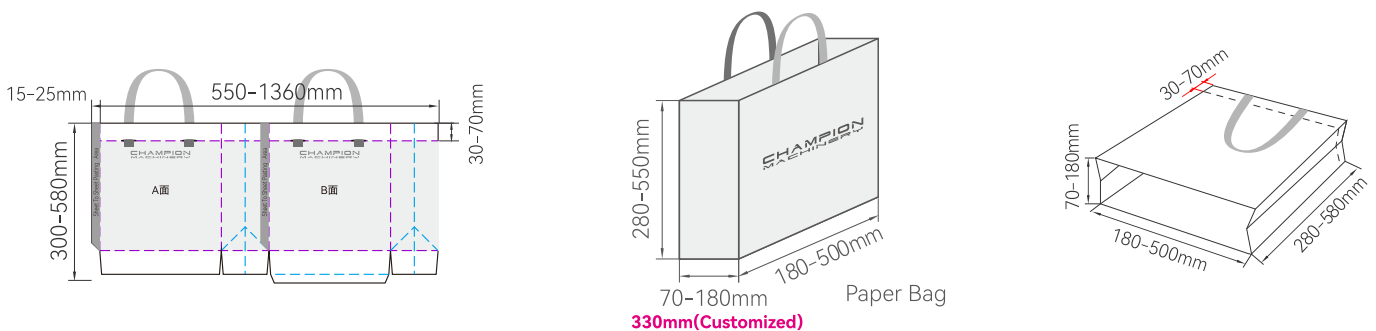
## 手动送料纸袋糊筒机



### 工艺流程图 Process Flowchart



### 参数示意图 Sheet Paper Data





## 机器说明 Machine Description

- 1、设备采用人工送纸，灵活方便。
  - 2、智能控制系统，支持变频调速与自动计数，精度高。
  - 3、适配牛皮纸、白卡纸、纸纱复合袋等多种材质的糊筒。
  - 4、采用水胶、热胶两用系统，替代传统黄胶，减少VOCs排放。
  - 5、该设备是奢侈品包装、精品零售等领域实现降本增效、品质升级的理想之选。
1. The equipment uses manual paper feeding, offering flexibility and convenience.
  2. The intelligent control system supports variable frequency speed regulation and automatic counting, ensuring high accuracy.
  3. It is compatible with various materials such as kraft paper, white cardboard, and paper-yarn composite bags.
  4. It utilizes a dual-use water-based and hot-glue system, replacing traditional yellow glue to reduce VOC emissions.
  5. This equipment is ideal for achieving cost reduction, efficiency improvement, and quality upgrades in luxury packaging, boutique retail, and other sectors.



## 主要技术参数 TechnicalData

纸张尺寸 Sheet Paper Size		
W进纸宽度范围	Sheet Paper Width	550-1360mm
H进纸长度范围	Sheet Paper Length	300-580mm
纸筒尺寸 Paper Bag Tube Size		
折袋口尺寸	Paper Bag Top Folder Depth	30-70mm
纸筒宽度	Paper Bag Tube Width	180-500mm
纸筒长度	Paper Bag Tube Length	280-580mm
风琴尺寸	Paper Bag Gusset	70-180mm/ <b>300mm(Customized)</b>
粘位尺寸	Sheet Paper Glue Side	15-25mm
适用纸张原材料和耗材 Suitable Paper Material & Glue & Handle		
牛皮纸	Kraft Paper	120-350gsm
铜版纸/覆膜纸	Coat Paper/ Laminated	157-250gsm
白卡纸	White Board Paper	157-300gsm
灰板纸	Grey Board Paper	157-300gsm
胶水	Glue	标配热熔选配胶水溶性冷胶 Hot melt glue option water base glue
运行 Running		
速度	Speed	0-30 pcs/min
安装要求 Installation		
装机总功率	Total Power Supply	9KW
压缩空气	Compressed Air/ Capacity	6bar
储气罐能量	Air Tank Capacity	15m³/h



## 设备占地规划 Machine Floor Plan

