

CHAMPION MACHINERY

MACHINERY MANUFACTURER OF **LUXURY PAPER BAGS**
CHAMPION MACHINERY MANUFACTURING CO.,LTD.



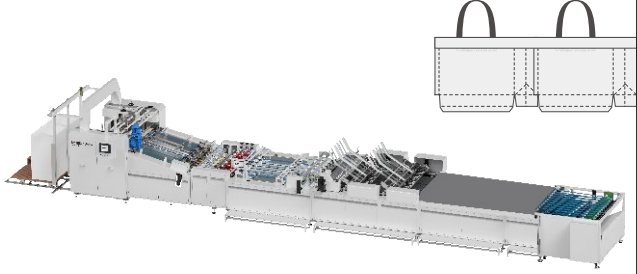
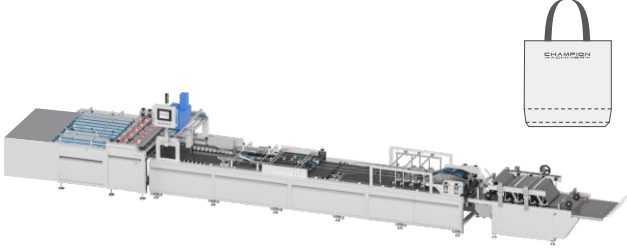
Tel: +86 139 2586 8276
WhatsApp: +86 139 2586 8276



E-mail: Bel@championbagmaker.com
Website: www.paper-bag-machine.com



Add: 42#2and Longyan Industrial Avenue, Humen Town
Dongguan City, China PR

Serial Number	Model	
Sept 1	CM2SP-1400 TCR/1600TCR Two Sheet Paper Pasting With 4pcs Top Cards + Ribbon Insert In 纸袋双拼贴头卡穿丝带机	
Sept 2	Manul Feeder 1400/1600 Tube Maker 手动送料纸袋糊筒机	



目录 Contents

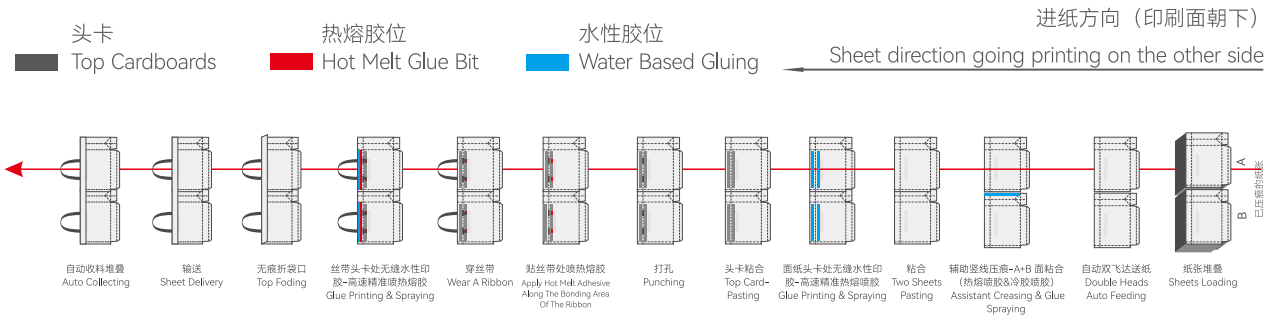
工艺流程图 Process Flowchart	-----	3
设备占地规划 Machine Floor Plan	-----	3
CM2SP-1400 TCR/1600TCR	-----	4
工艺流程图 Process Flowchart	-----	4
机器说明 Machine Description	-----	5
主要技术参数 TechnicalData	-----	5
设备占地规划 Machine Floor Plan	-----	5
丝带款纸袋样式 Ribbon Paper Bag Style	-----	6
袋头打孔样式 Bag Head Punching Style	-----	6
丝带样式 Ribbon Style	-----	7
Manul Feeder 1400/1600 Tube Maker	-----	8
工艺流程图 Process Flowchart	-----	8
参数示意图 Sheet Paper Data	-----	8
机器说明 Machine Description	-----	9
主要技术参数 TechnicalData	-----	9
设备占地规划 Machine Floor Plan	-----	9
核心配件 Core Accessories	-----	10



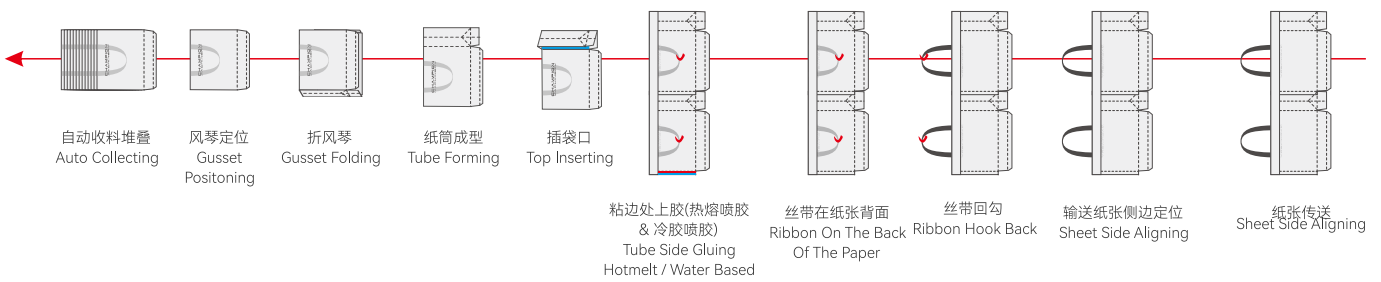
工艺流程图 Process Flowchart

CM2SP-1400 TCR/1600TCR

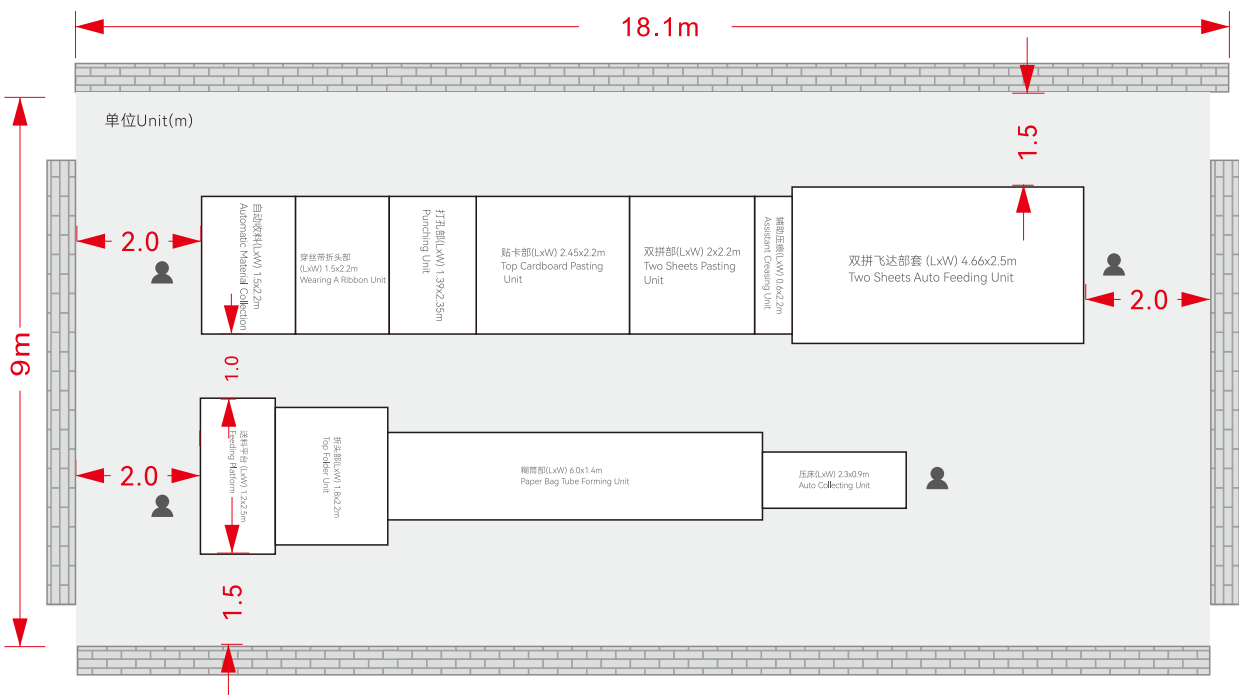
Two Sheet Paper Pasting With 4pcs Top Cards + Ribbon Insert In



Manul Feeder 1400/1600 Tube Maker

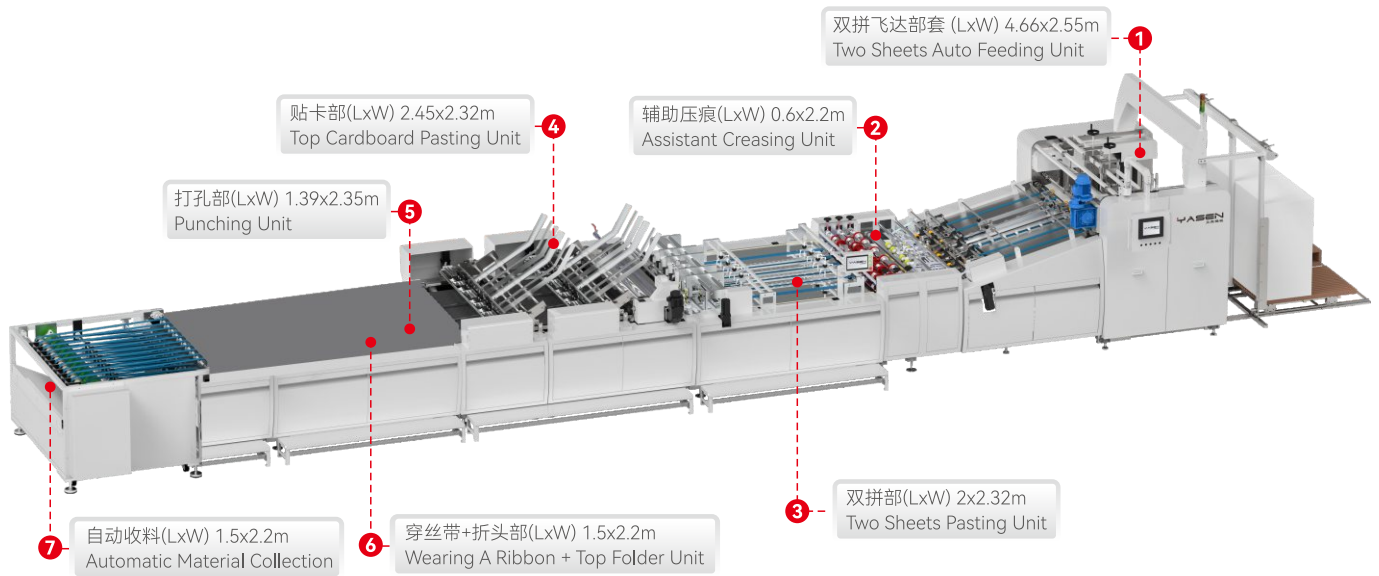


设备占地规划 Machine Floor Plan



CM2SP-1400TCR/1600TCR

Two Sheet Paper Pasting With 4pcs Top Cards + Ribbon Insert In
纸袋双拼贴头卡穿丝带机

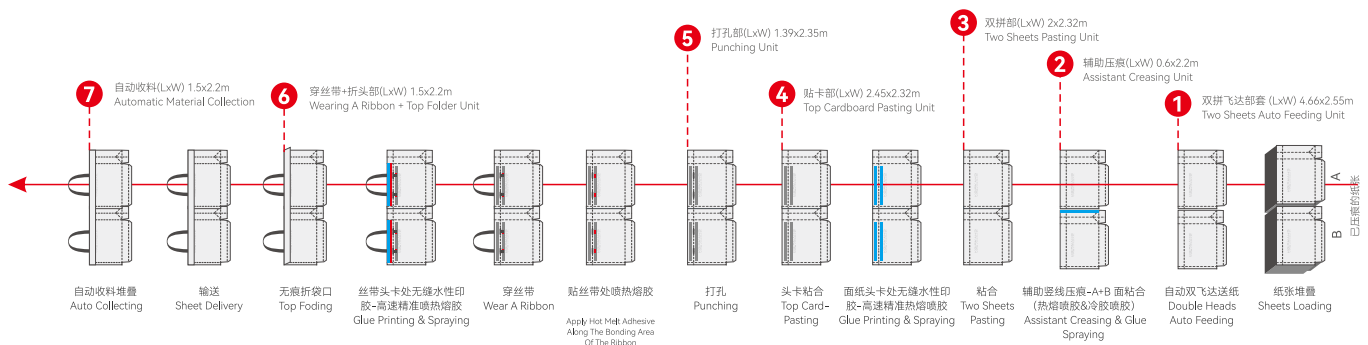


工艺流程图 Process Flowchart

头卡 Top Cardboards
 热熔胶位 Hot Melt Glue Bit
 水性胶位 Water Based Gluing

进纸方向 (印刷面朝下)

Sheet direction going printing on the other side



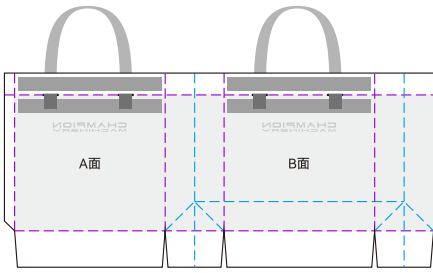


主要技术参数 TechnicalData

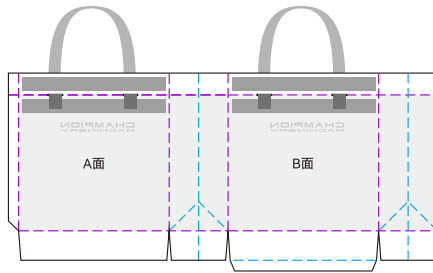
纸张尺寸 Sheet Paper Size		
W进纸宽度范围	Sheet Paper Width	550-1360mm/1400TCR 550-1560mm/1600TCR
H进纸长度范围	Sheet Paper Length	300-580mm
双拼纸尺寸 Two Sheet Paper Size		
W1进纸宽度范围	Before pasting Sheet Paper Width 1	400-680mm/1400TCR 400-780mm/1600TCR
W2进纸宽度范围	Before pasting Sheet Paper Width 2	400-680mm/1400TCR 400-780mm/1600TCR
W进纸宽度范围	After pasted W1+W2 sheet Paper Width	550-1360mm/1400TCR 550-1560mm/1600TCR
H进纸长度范围	Sheet Paper Length	300-580mm
纸筒尺寸 Paper Bag Tube Size		
折袋口尺寸	Paper Bag Top Folder Depth	30-70mm
纸筒宽度	Paper Bag Tube Width	180-500mm
纸筒长度	Paper Bag Tube Length	280-580mm
风琴尺寸	Paper Bag Gusset	70-180mm/ 300mm(Customized)
粘位尺寸	Sheet Paper Glue Side	15-25mm
适用纸张原材料和耗材 Suitable Paper Material & Glue & Handle		
牛皮纸	Kraft Paper	120-350gsm
铜版纸/覆膜纸	Coat Paper/ Laminated	157-250gsm
白卡纸	White Board Paper	157-300gsm
灰板纸	Grey Board Paper	157-300gsm
胶水	Glue	标配热熔胶, 选配水性冷胶 Hot melt glue option water base glue
手提绳	Handle	纸手腕圆/扁, 贴丝带, 打头手提绳子/丝带 其他 Flat paper handle, twisted paper handle, tipping with rope or ribbon handle, Ribbon handles with top cardboard pasting glue fix of luxury paper bag
头卡 Top Cardboards		
头卡宽度	Top Cardboards Width	25-65mm
头卡长度	Top Cardboards Length	140-500mm/1400TCR 180-580mm/1600TCR
头卡克重	Top Cardboards Thickness	200-400gsm 4pcs / 200-600gsm 2 pcs
运行 Running		
速度	Speed	0-30 pcs/min
安装要求 Installation		
装机总功率	Total Power Supply	41KW
压缩空气	Compressed Air/ Capacity	6bar
储气罐能量	Air Tank Capacity	15m ³ /h



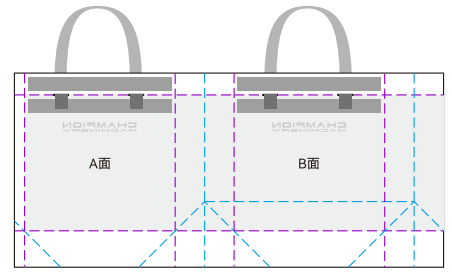
丝带款纸袋样式 Ribbon Paper Bag Style



开花底方形孔丝带款
Japanese Base With Square
Hole And Ribbon Pattern

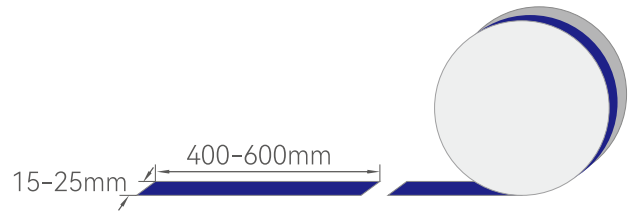


日本底椭圆孔丝带款
Japanese Base With Oval
Hole And Ribbon Pattern

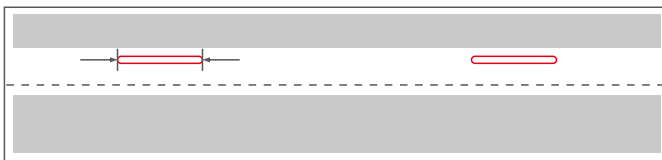


八字底方形孔丝带款
Square Hole And Ribbon
Pattern

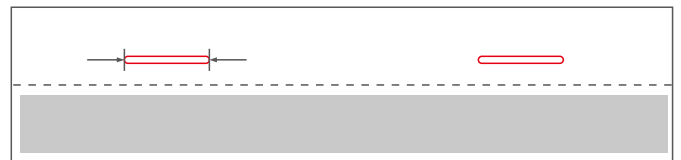
织带宽度: 15-25mm
织带长度: 400-600mm
Handle Width: 15-25mm
Handle Length: 400-600mm



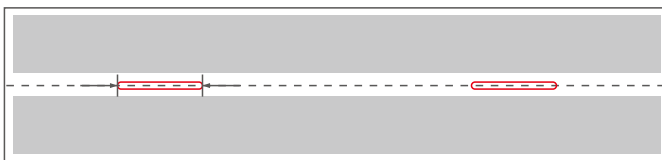
袋头打孔样式 Bag Head Punching Style



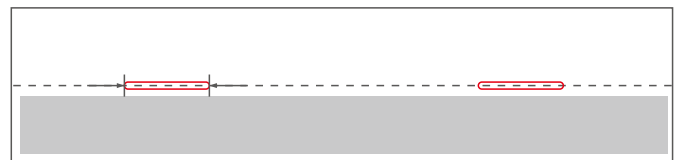
Size: 26mm x 3mm



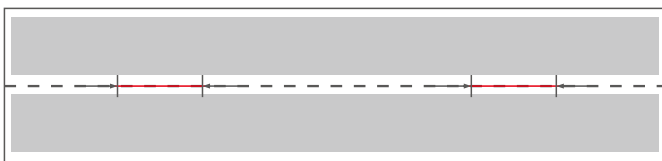
Size: 26mm x 3mm



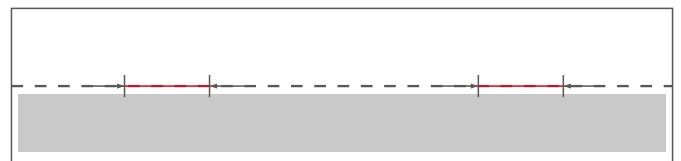
Size: 26mm x 3mm



Size: 26mm x 3mm



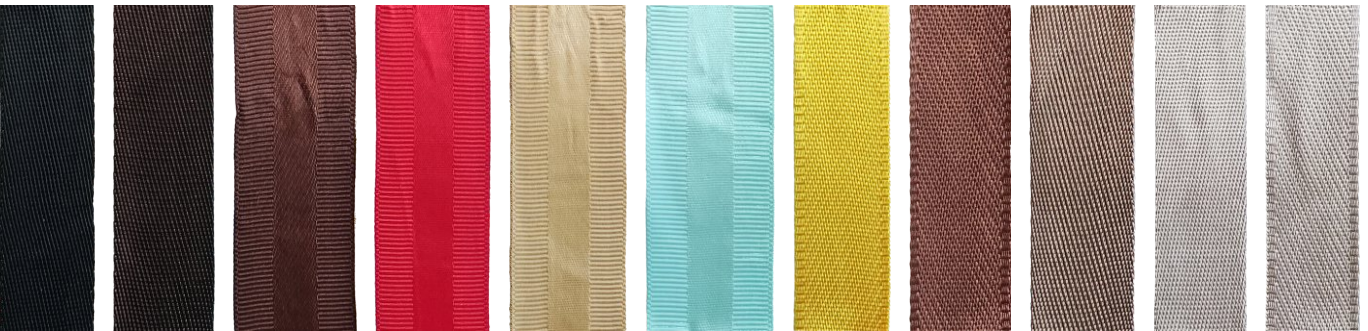
Size: 30mm



Size: 30mm

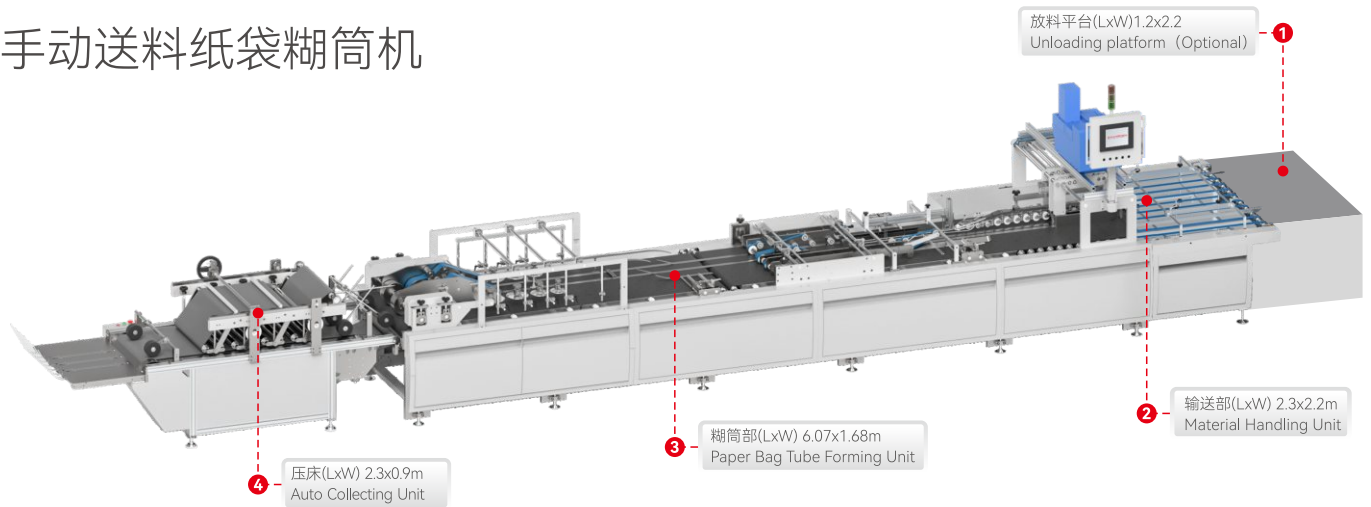


丝带样式 Ribbon Style

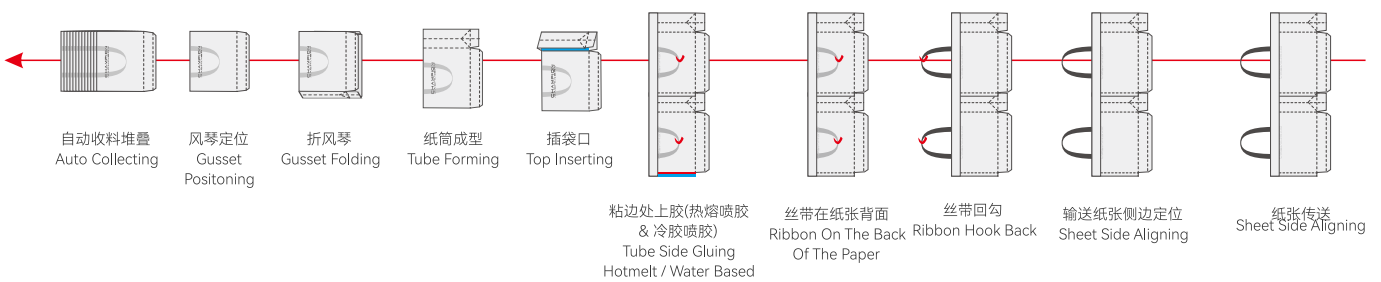


Manul Feeder 1400 Tube Maker

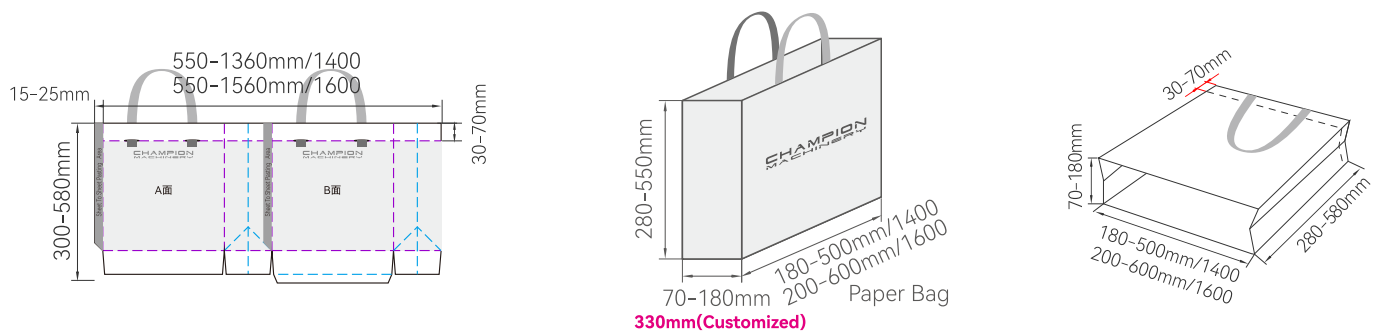
手动送料纸袋糊筒机



工艺流程图 Process Flowchart



参数示意图 Sheet Paper Data





机器说明 Machine Description

- 1、设备采用人工送纸，灵活方便。
 - 2、智能控制系统，支持变频调速与自动计数，精度高。
 - 3、适配牛皮纸、白卡纸、纸纱复合袋等多种材质的糊筒。
 - 4、采用水胶、热胶两用系统，替代传统黄胶，减少VOCs排放。
 - 5、该设备是奢侈品包装、精品零售等领域实现降本增效、品质升级的理想之选。
1. The equipment uses manual paper feeding, offering flexibility and convenience.
 2. The intelligent control system supports variable frequency speed regulation and automatic counting, ensuring high accuracy.
 3. It is compatible with various materials such as kraft paper, white cardboard, and paper-yarn composite bags.
 4. It utilizes a dual-use water-based and hot-glue system, replacing traditional yellow glue to reduce VOC emissions.
 5. This equipment is ideal for achieving cost reduction, efficiency improvement, and quality upgrades in luxury packaging, boutique retail, and other sectors.

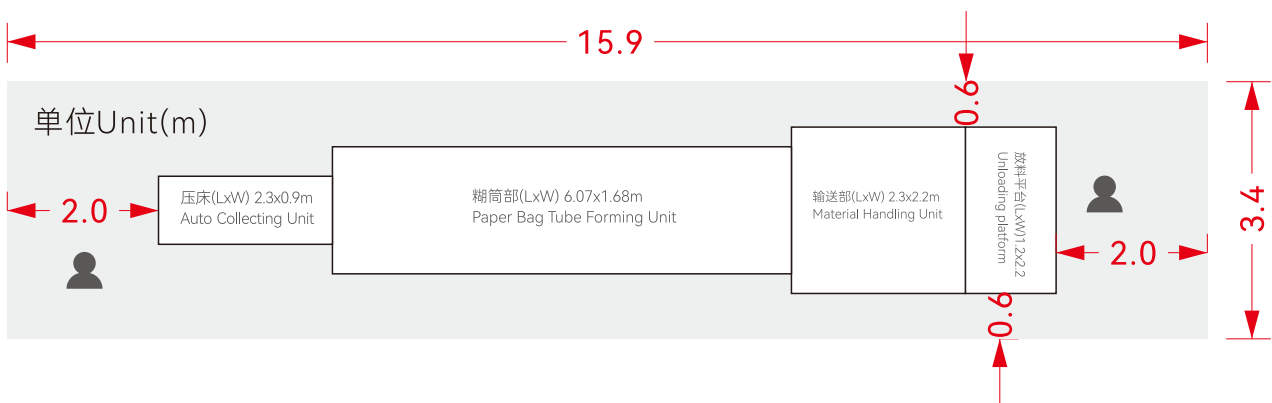


主要技术参数 TechnicalData

纸张尺寸 Sheet Paper Size		
W进纸宽度范围	Sheet Paper Width	550-1360mm/1400 550-1560mm/1600
H进纸长度范围	Sheet Paper Length	300-580mm
纸筒尺寸 Paper Bag Tube Size		
折袋口尺寸	Paper Bag Top Folder Depth	30-70mm
纸筒宽度	Paper Bag Tube Width	180-500mm
纸筒长度	Paper Bag Tube Length	280-580mm
风琴尺寸	Paper Bag Gusset	70-180mm/ 300mm(Customized)
粘位尺寸	Sheet Paper Glue Side	15-25mm
适用纸张原材料和耗材 Suitable Paper Material & Glue & Handle		
牛皮纸	Kraft Paper	120-350gsm
铜版纸/覆膜纸	Coat Paper/ Laminated	157-250gsm
白卡纸	White Board Paper	157-300gsm
灰板纸	Grey Board Paper	157-300gsm
胶水	Glue	标配热熔选配胶水溶性冷胶 Hot melt glue option water base glue
运行 Running		
速度	Speed	0-30 pcs/min
安装要求 Installation		
装机总功率	Total Power Supply	9KW
压缩空气	Compressed Air/ Capacity	6bar
储气罐能量	Air Tank Capacity	15m³/h



设备占地规划 Machine Floor Plan





核心配件 Core Accessories



SynMatic

运动控制系统
伺服电机/伺服驱动/变频器
SIMOTION
Servo motor/servo drive/frequency converter

安驰 中国
SynMatic China



SynMatic

总线控制
BUS CONTROL

安驰 中国
SynMatic China



FOTEK

编码器/接近开关
热过载继电器接触器
ENCODER/PROXIMITY SWITCH
Thermal overload relay contactor

阳明 台湾
FOTEK Taiwan



KEYENCE

主光电眼/光纤
MAIN OPTICAL EYE/FIBER

基恩士 日本
Keyence Japan



繁易
FLEXEM

触摸屏
TOUCH SCREEN

繁易 中国
FLEXEM China



亞德客
AirTAC

电磁阀
SOLENOID VALVE

亚德客 台湾
AirTAC Taiwan



CPG

减速机马达
REDUCER MOTOR

晟邦 台湾
Shengbang CPG Taiwan



SIEMENS

主马达
MAIN MOTOR

茵梦达 德国
Innomotics Germany



ORION

真空泵
VACUUM PUMP

好利旺 日本
ORION Japan